

Using Photoshop 7.0 to Transpose Two Pictures and Customize them With Text

The instructions below will show you how to take an object from one image and transpose it onto another image. You will first be using Internet Explorer to locate and save two images to manipulate. Once your images are saved to your computer you will use Photoshop 7.0 to copy part of your subject image, transpose it onto your background, make it look proportional, customize it with text, and save it as a finished product.

Materials: Photoshop 7.0 and Internet Explorer

Table of Contents:

A. Open up Internet Explorer and Save Pictures	2-3
B. Open up <i>Adobe Photoshop 7.0</i>	4
C. Open up the Two Pictures to be Transposed	4-5
D. Cutting the Subject Out of its Original Picture	6-7
E. Copying Subject and Placing it on the Other Picture	7-9
F. Adding Text to the Image	9-10
G. Save Work Before Flattening the Image	10-11
H. Flatten the Image	11

A. Open up Internet Explorer and Save Pictures

1. Open **Internet Explorer**.



2. Enter the Web Address below.
<http://originaldo.com/george-bush-freedom.jpg>



3. Press **Enter**.

A picture of George W. Bush should appear.



4. Right click on the picture, select **Save Picture As**.

A window should appear with george-bush-freedom as the file name.



5. Click **Save** to save the picture to the My Pictures folder.



6. Return to Internet Explorer and enter the Web Address below.
<http://wikitravel.org/upload/en/3/32/Paris-eiffel-tower.jpg>

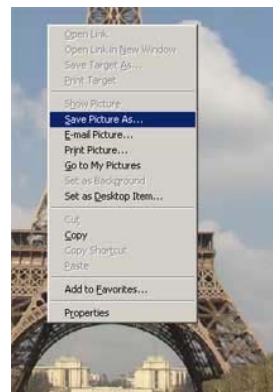
7. Press **Enter**.

A picture of the Eiffel Tower should appear which will be used as the background image.

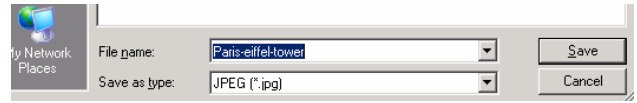


8. Right click on the picture, select **Save Picture As**.

A window should appear with Paris-eiffel-tower as the file name.



9. Click **Save** to save the picture to the My Pictures folder.



B. Open up *Adobe Photoshop 7.0*

1. Click **Start** on your desktop, highlight **All Programs**.

Another small window should appear.

2. Highlight **Graphics**, select **Adobe Photoshop 7.0**.

This should open up the program.

C. Open up the Two Pictures to be Transposed

1. Click on **File**, select **Open**.

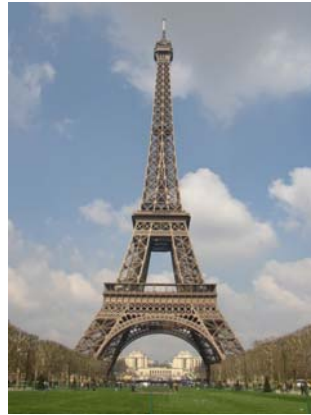
A pop-up window should have appeared with options for finding the location of your file.



2. Double click on the **My Pictures** folder.
3. Locate the file to be used as the background. (in this case, the Eiffel Tower will be used as the background)

4. Select file name (**Paris-eiffel-tower**), click **Open**.

The picture you desire to use as your background should now be open and visible.



5. Click on **File**. Select **Open**.

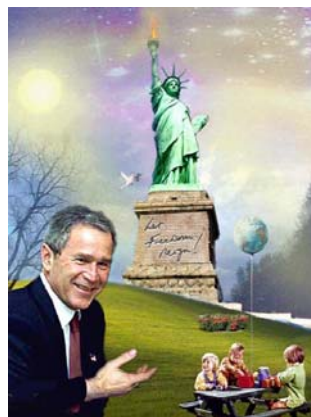
A pop-up window should have appeared with options for finding the location of your file.

6. Double click on the **My Pictures** folder.

7. Locate the file to be used as the subject.
(in this case, George Bush will be used as the subject)

8. Select file name (**george-bush-freedom**), click **Open**.

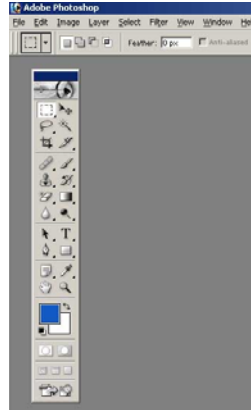
The file, which is to be used as the subject, should open in a separate window from the first picture.



D. Cutting the Subject Out of its Original Picture

1. Locate the **Tool Bar** on the left hand side of the screen.

Note: If you are not able to locate the Tool Bar, it may be closed. To open Tool Bar, click Window and select Tools.

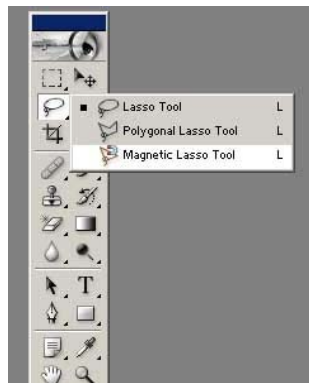


2. Double click on the **Hand** in the Tool Bar to make the picture larger.

The picture will now fill the screen so the outline of the object will be easier to see.



3. Right click the **Lasso** icon.



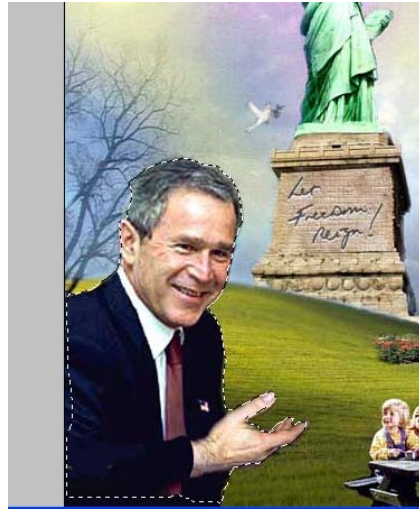
4. Choose the **Magnetic Lasso** from the three types given.

5. Hold down the left mouse button and drag the lasso character slowly around the edge of the George Bush.

WARNING! You must end at the same place you start.

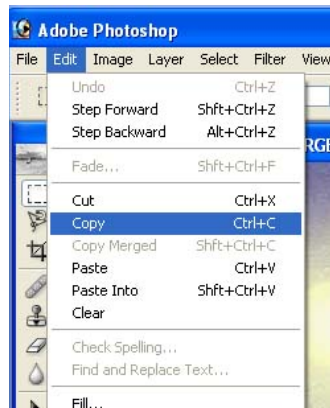
Note: Left clicking as you go around will help to keep outline closer to the picture.

Once the object to be placed in front of the background has been lassoed, a highlighted selection will appear.



E. Copying Subject and Placing it on the Other Picture

1. Go to **Edit**, select **Copy**.



2. Locate the **Move** icon in the Tool Bar. It has an arrow and a directional icon.



3. Click on the background (Eiffel Tower) picture, go to **Edit**, select **Paste**.

The image appears on a new layer in front of the Eiffel Tower. The imported picture should look too small and disproportional.



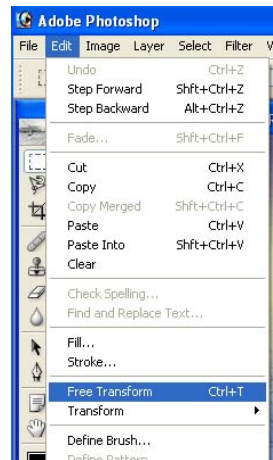
4. Select the **Move** icon, click on the subject to be moved. Place the subject where you desire.



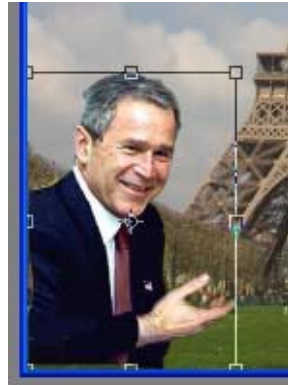
5. Click on **Edit**.

6. Select **Free Transform**.

The imported picture will appear in a box with small boxes at the corners and in the middle of each edge.



7. Click and hold down the mouse button over the box in the upper right hand corner.



8. Move the mouse in an upward diagonal motion to the left.

The picture has been made larger.

9. Release the mouse button when you feel that it is proportionally correct.



F. Adding Text to the Image

1. Click **T** on the Toolbar.

The header will change. You are able to change the font, the size, the style and color of the text.

NOTE: Right Click on **T** will allow you to give you Text options



2. The cursor will appear as a box. Click where the text should go and begin to type *I Just sold America*.

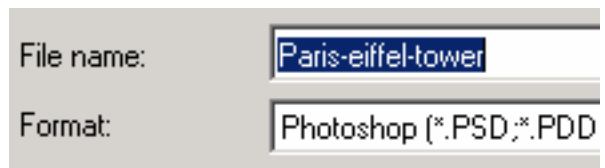


3. Click on the **Move** icon in the Toolbar to position the text in the image.

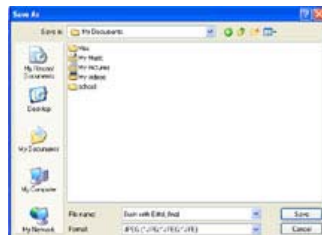
G. Save Work Before Flattening the Image

1. Click **File**, select **Save As**.

NOTE: Using the Format: Photoshop *.PSD will make any future changes to the image much easier. The current image is created in layers. The ability to change any part of the layer is easier if it is saved before flattening the image.



2. Locate the folder where you would like to save your picture.



3. Type in the name of the file in **File Name**.

4. Click **Save**.

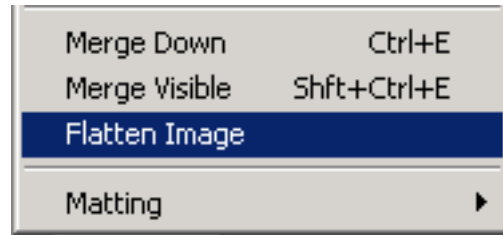
Your document has now been saved.



H. Flatten the Image

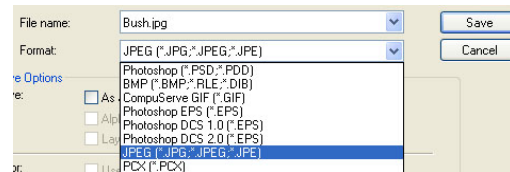
1. Click **Layer**, select **Flatten Image**.

This will combine the 3 layers into 1, thus making the size of the image smaller.



2. Click **File**, select **Save As**.

3. Save picture in the .jpg format chosen from the Format drop down menu.



4. Select **Save**.

Your image is now saved for future use.