

An abstract graphic featuring three blue circles of varying sizes, each composed of concentric rings of different shades of blue. Two thin blue lines intersect to form a V-shape, with the circles positioned near the vertices. The background is white.

Pixlr.com: How to Transpose Images

Pixlr.com is a free portable alternative to other costly image editing programs. The tutorial will instruct students of three dynamic ways to transpose images. The step-by-step instructions will cover opening images with Pixlr and demonstrate how to use the lasso, clone stamp, and the magic wand tool to edit your pictures. Students will learn the fundamental techniques to animate and revive any picture. Why pay hundreds of dollars for a photo-editing program, when Pixlr is free!

Requirements:

- Web browser with java enabled
- Internet connection

Pixlr Tool Box

Lasso tool: a free-hand selection tool. It is usually used to cut out, or select specific sections of a pre-existing picture

Wand tool: allows you to select an area of an image based on its color. Tolerance determines how closely the colors match, thus increasing the tolerance will select a larger area of similar color.

Clone stamp tool: allows you to duplicate part of an image. When aligned is selected, the duplication continues regardless of releasing the mouse button

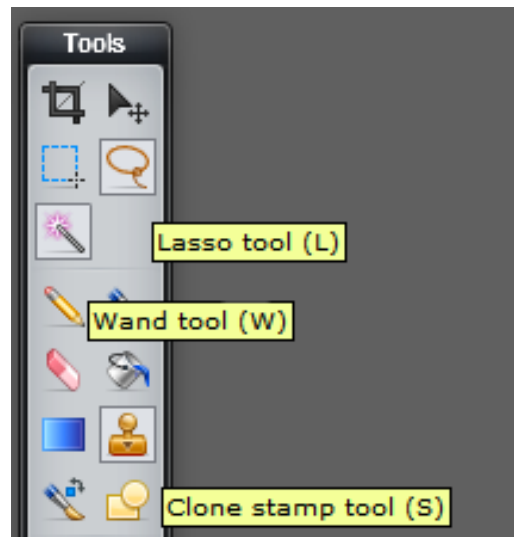
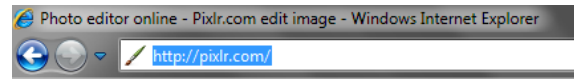


Table of Contents

<u>Starting Pixlr</u>	1-2
<u>Create a new image</u>	3-4
<u>Open image from Computer</u>	5-6
<u>Open image from URL</u>	7-9
<u>Using the Lasso Tool</u>	10-19
<u>Using the Clone Tool to Duplicate Images</u>	20-24
<u>Using the Clone tool to Remove or Hide Detail</u>	25-31
<u>Using the Magic Wand</u>	32-38

1. Navigate to <http://pixlr.com/>



2. Click ***Open Image Editor***

Welcome to the most popular advanced online image editor in the world!

-> Open image editor <-

Opening Images with Pixlr

3. Click on ***Create a new image***



4. Select *1024 x 768* in *Presets*

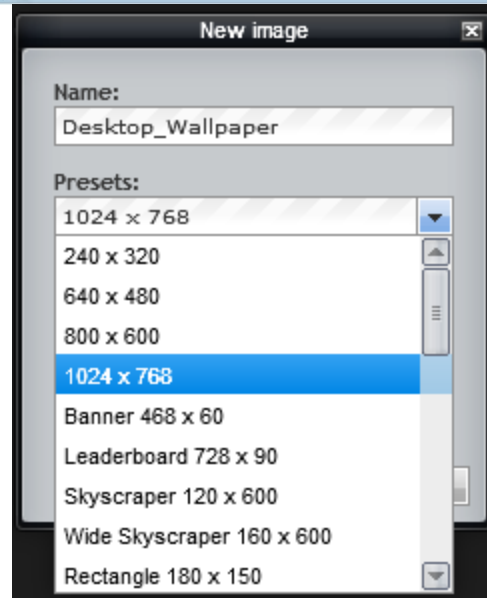
Notes: When creating a desktop wallpaper, opt for the preset that best matches your resolution. In most instances 1024 x 768 will do.

If you plan to print the picture use the equivalent megapixels:

2MP: 1216 x 912 (3x5 in)

4MP: 2240 x 1680 (5x7 in)

6MP: 2737 x 2192 (8x10 in)



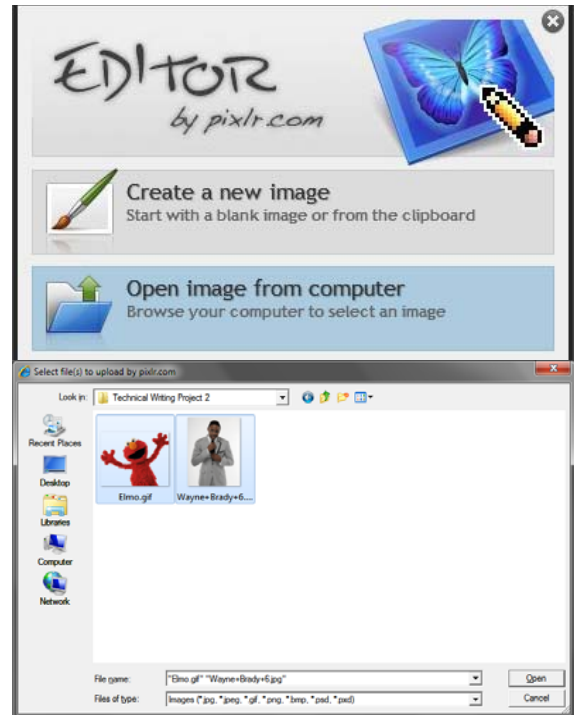
5. Click on ***Open image from computer***

6. Select images to use

Note: Images used in the tutorial can be found here

[Elmo](#)

[Wayne Brady](#)

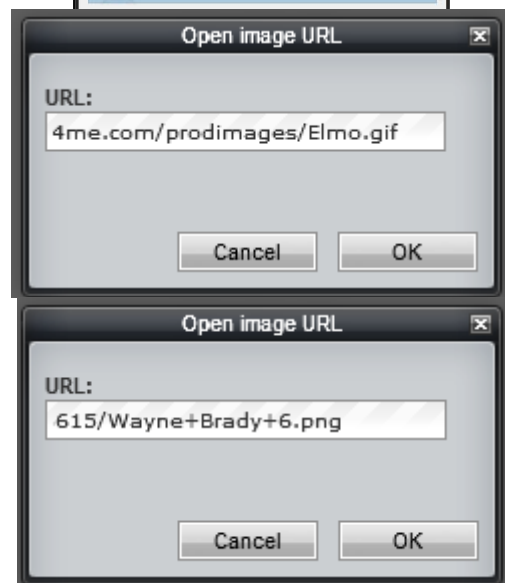


7. Click on ***Open image from URL***

8. Enter URL for Elmo image and click ***ok***

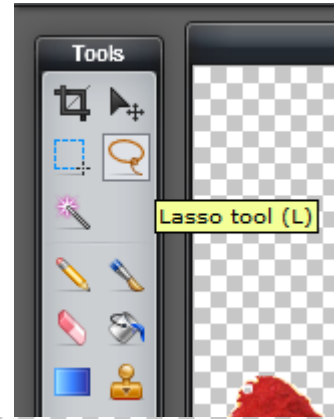


9. Click ***File*** select ***Open image from URL*** enter URL for Wayne Brady image and click ***ok***



10. Using the Lasso Tool

11. Select **Lasso Tool**



12. Draw an outline along the desired image by holding the mouse

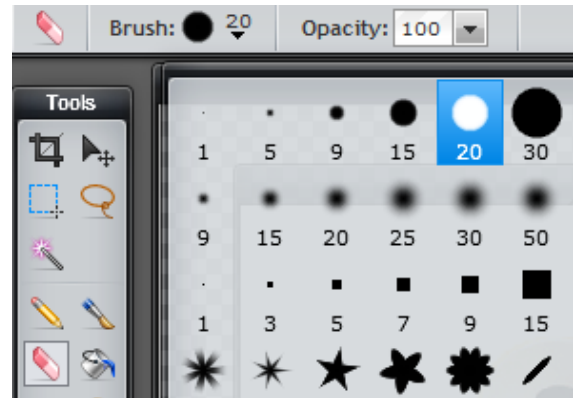


13. Under **Edit** and Select **Copy**

14. Under **File** Select **New** and click ok

15. Click **Tools** in the right column, select the eraser tool to correct any imperfections

Note: Select Brush to change the size to a smaller hard round brush for more accurate erasing.



16. Select **Edit** then click **select all** to copy the entire image to the clipboard

17. Paste picture into second image of your choice.

Note: The Wayne Brady image was used as the second image.

To blend the Elmo head with the Wayne Brady image we need to apply a horizontal flip and free transformation.



18. Click **Layers** in the menu bar and select **Flip layer horizontal**

19. Click **Edit** and select **free transform** then adjust the size of the head to conform to Wayne Brady's body. Here is what your final product should look like.



20. Using the Clone Tool to Duplicate Images

21. Position the cursor over the area of the image you wish to duplicate

Note: Pixlr does not allow cloning between two images.



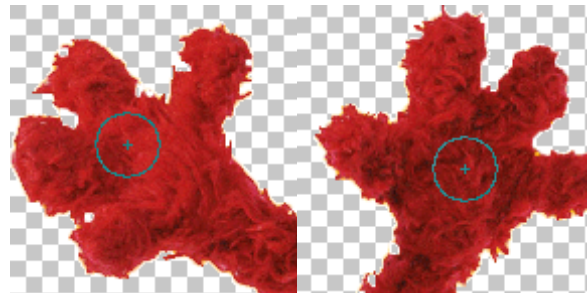
22. Hold the control button and left click

Note: The action will create an anchor on the source image that will be replicated in the new image



23. Determine the area that the duplicated image will painted on

Note: For a more precise replicated image use a harder brush



24. Click and hold the mouse to start the image duplication; once you release the mouse the anchor will reset back to the area of the source image

Note: A good technique is to outline with the clone tool then fill in.



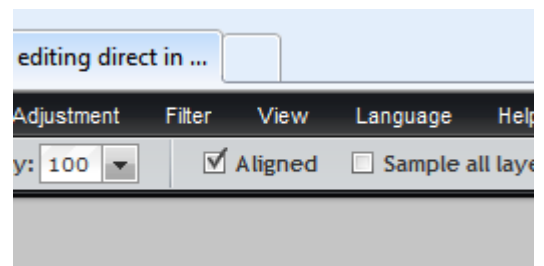
25. Using the Clone tool to Remove or Hide Detail

26. Determine the area of the picture you want to erase, or remove.

Note: You must find a source area that will clone to cover or hide the area

27. Click the **stamp tool**

28. Click **aligned**



29. Position the cursor over the source point

30. Hold control and left click to engage the anchor of the stamp tool

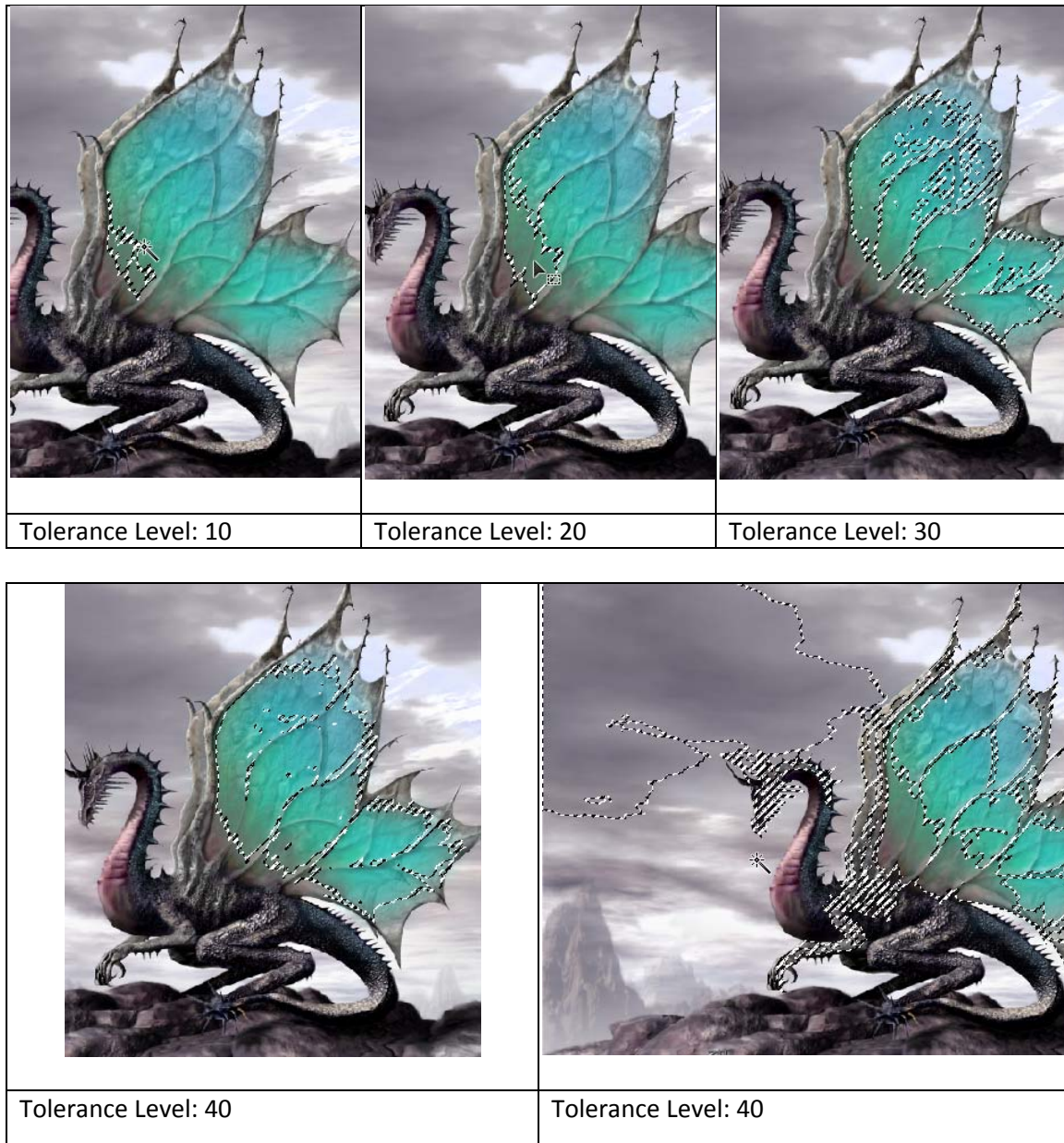


31. Position the cursor over the area to be removed and left click to start removing or covering up the detail



32. Using the Magic Wand

Note: Here is an example of the different tolerance levels of the magic wand tool. When clicking the same area we see that larger areas of similar colors are selected.



33. Set tolerance to 25

Note: The optimal tolerance is dependent on the amount of similar colors of the source area.

34. Click on the area or object that will be duplicated

35. Hold shift and continue to left click until the entire area or object is selected

36. Click **Edit** then select **Copy**

37. Paste image

38. Click **Edit** and select **free transform** then rotate the selected image

