

POLICY STATEMENT APPROVEDGRADUATE STUDENT APPEALS

Attached is the flow chart for grievances of graduate students. This should be used along with the general guidelines provided below.

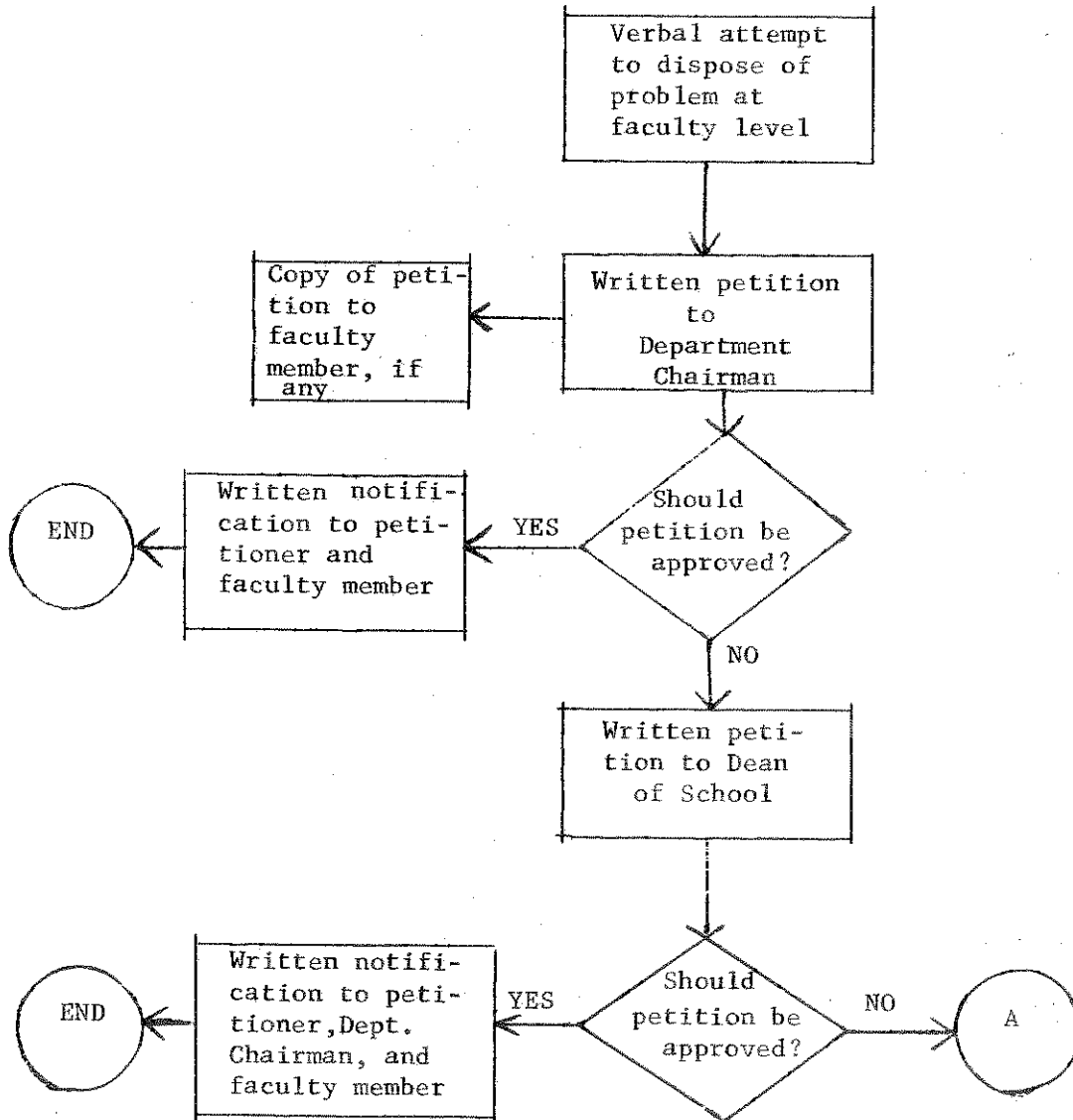
Supplementary Guidelines for Use
with Flow Chart for Graduate
Student Grievance Review

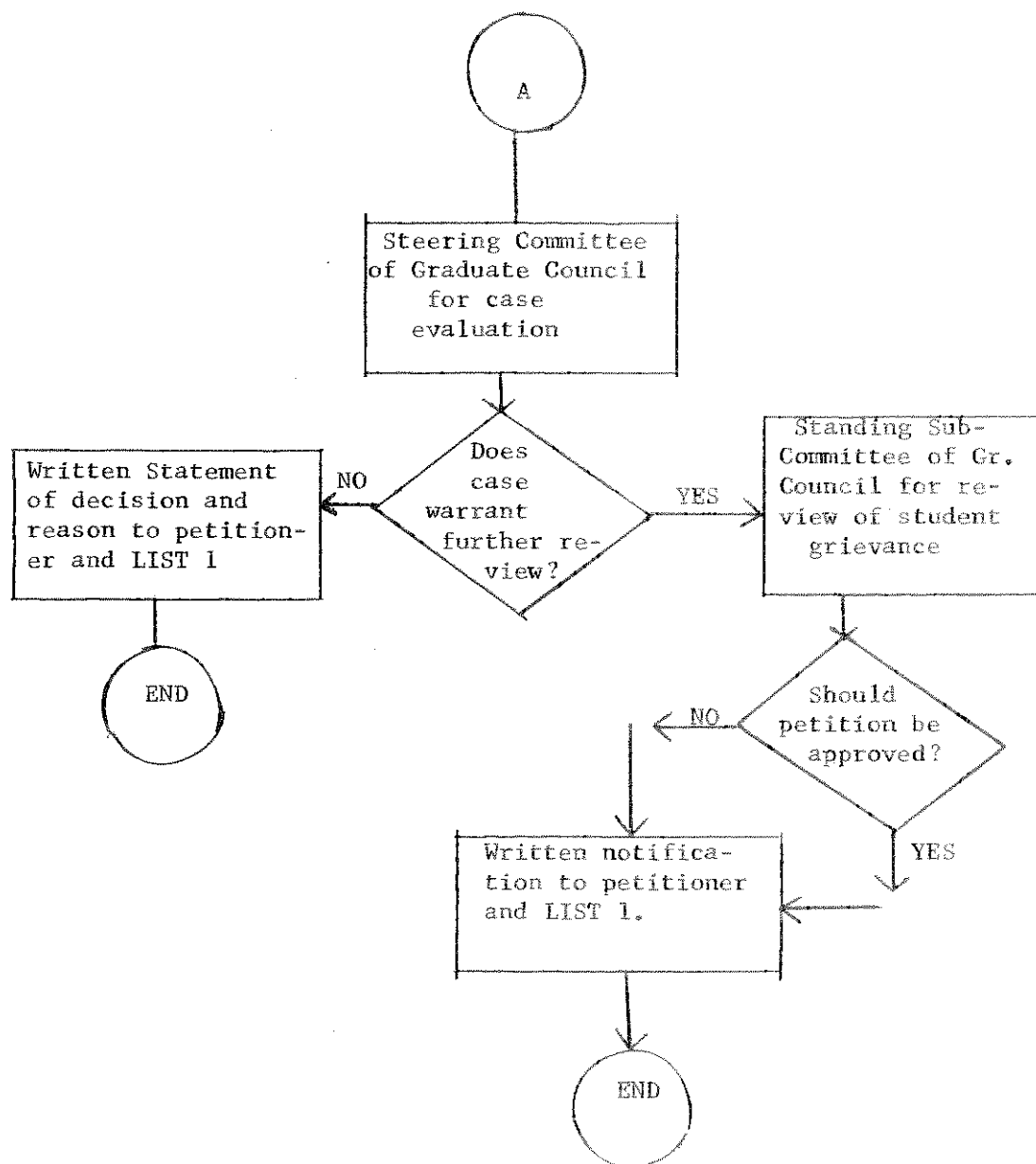
1. Steering Committee of Graduate Council shall review case only to determine if further review is necessary.
2. If the Steering Committee denies further review of the petition, a statement of the specific reason must accompany said denial.
3. The Graduate Council shall provide clarification of policy statements to the standing subcommittee for grievance review.
4. At least one student shall be on the standing committee for grievance review.
5. No member of the Steering Committee of the Council may serve on the standing subcommittee of the Graduate Council for review of student grievances.
- *6. Any grievance procedure must be initiated by the student involved within the first regular semester after the alleged grievance occurs.

Distributed to the Academic Senate 4/16/71 and 4/30/71.

*Added as an Amendment 5/21/71, Item #23. Approved by Academic Senate as amended, 5/21/71.

Approved by the President of the College 6/21/71.

FLOW CHART FOR GRADUATE STUDENT GRIEVANCE PROCEDURES

FLOW CHART FOR GRADUATE STUDENT GRIEVANCE PROCEDURE (Continued)LIST 1

College President
 Graduate Council
 School Dean
 Department Chairman
 Faculty Member

