

Dowling18C.wmx:

Inflation and Unemployment Models

TABLE OF CONTENTS

PREFACE	1
REFERENCES	2
INFLATION & UNEMPLOYMENT IN CONTINUOUS TIME	3
THE TIME PATH OF $\Pi(t)$, EXPECTED INFLATION RATE	5
THE PHILLIPS CURVE IN CONTEXT	13
UNSTABLE INFLATION-UNEMPLOYMENT RELATION EXAMPLE	21
ORDINARY DIFFERENTIAL EQUATIONS WITH A VARIABLE TERM	24
HIGHER ORDER (> 2ND) ODE'S SOLUTION WITH DSOLVE	29
REVIEW OF SECOND ORDER LINEAR DIFFERENCE EQUATIONS	32
INFLATION & UNEMPLOYMENT IN DISCRETE TIME	33
THE TIME PATH OF THE INFLATION RATE $p[t]$	33
THE TIME PATH OF THE UNEMPLOYMENT RATE $U[t]$	43
2ND ORDER LINEAR DIFFERENCE EQNS WITH A VARIABLE TERM	55
HIGHER ORDER LINEAR DIFFERENCE EQNS	62

```
(%i5) load(draw)$ set_draw_defaults(line_width=2, grid = [2,2], point_type = filled_circle,
    background_color = light_gray, draw_realpart=false)$
    fprintfprec:5$ ratprint:false$ kill(all)$
```

```
(%i1) load ("Econ2.mac");
```

```
(%o1) c:/work5/Econ2.mac
```

1 Preface

Dowling18C.wmx is one of a number of wxMaxima files available in the section
Economic Analysis with Maxima
on my CSULB webpage.

In Dowling18C.wmx, we use Maxima to discuss inflation and unemployment models. Our treatment of continuous time models follows Chiang and Wainwright, Ch. 16, Sec. 5. Our treatment of discrete time models follows Chiang and Wainwright, Ch. 18, Sec. 3. We have added sections dealing with differential equations with a variable term and higher order ordinary differential equations (using `desolve`) following C&W 16.6,7.

We have changed some of the symbols used in particular problems. An approximate pdf translation (using Microsoft print to pdf) is available as Dowling18Cfit.pdf. That pdf file can be searched using Ctrl-F.

Ted Woollett
<https://home.csulb.edu/~woollett/>
woollett@charter.net
Jan. 25, 2021

2 *References*

1. Fundamental Methods of Mathematical Economics, Alpha C. Chiang and Kevin Wainwright, 4th ed., 2005, McGraw-Hill (Ch. 16 & 18)
2. Phillips Curve Discussion and plots:
<https://courses.lumenlearning.com/boundless-economics/chapter/the-relationship-between-inflation-and-unemployment/>
3. Short Run Phillips Curve Video, 15 min
<https://www.youtube.com/watch?v=vsbj2ppq7IQ>
4. Long Run Phillips Curve Video, 10 min.
<https://www.youtube.com/watch?v=GycD6uitKrA>
5. Ch 30: Money Growth and Inflation
<https://www.youtube.com/watch?v=1mXrsUkABWM>
6. Ch. 35: The Short Run Tradeoff Between Inflation and Unemployment, 32 min video by Jonathan Keisler
<https://www.youtube.com/watch?v=VYr-GPdVYvg>
7. Ch. 8, The Natural Rate of Unemployment and the Phillips Curve Macroeconomics, Olivier Blanchard, Fifth Edition, 2011, Prentice Hall
8. Ch. 35, The Short-Run Tradeoff between Inflation and Unemployment, Principles of Economics, Sixth Ed., N. Gregory Mankiw

3 *Inflation and Unemployment in Continuous Time*

We review the continuous time modeling of the interaction between inflation and unemployment, as discussed in Chiang and Wainwright, Ch. 16, Sec. 5.

3.1 The Phillips Relation

In the journal *Economica* (Nov. 1958), A.W. Phillips published a paper based on data relating the rate of growth of money wages and unemployment in the U.K. over the period 1861-1957.

In Phillips' original formulation, $W(t)$ is the wage at time t , $w = (1/W)*dW(t)/dt$ is defined as the "rate of growth of money wage" at time t , $U(t)$ is the "rate of unemployment", and Phillips proposed the relation $w = f(U)$ such that $dw/dU < 0$, which says that an increase in unemployment normally means a decrease in the rate of growth of money wages for production workers, and conversely, a decrease in unemployment normally means an increase in the rate of growth of wages.

The unemployment rate U represents the number of unemployed as a percentage of the labor force. Labor force data are restricted to people 16 years of age and older, who currently reside in 1 of the 50 states or the District of Columbia, who do not reside in institutions (e.g., penal and mental facilities, homes for the aged), and who are not on active duty in the Armed Forces. [units: percent; <https://fred.stlouisfed.org/series/UNRATE>]

The Phillips relation was then extended to finding a function that connects "the rate of inflation" $p = (1/P)*dP/dt$ (P is the price level), to the rate of unemployment U . This was based on the assumption that if w is positive, reflecting a growing money-wage cost, inflationary pressures on prices would appear, so the rate of inflation p should also be the same function of unemployment U : $p = f(U)$ such that $dp/dU < 0$ (an increase in unemployment normally means a decrease in the rate of inflation).

As a math diversion, note that $d(\ln(x))/dt = (1/x)*dx/dt$:

(%i2) depends (x,t);

(%o2) $[x(t)]$

(%i3) diff (log(x), t);

(%o3) $\frac{\frac{d}{dt} x}{x}$

So we can write $p = d(\ln(P))/dt$, and $w = d(\ln(W))/dt$, as well.

The inflationary pressure of a positive value of w can be offset by an increase in labor productivity T . Prices can remain stable in the face of increased wages paid by producers provided each worker is able to produce goods at a greater rate. If money wage grows faster than productivity, then inflationary pressure on prices should normally occur.

The simplest assumption is a linear relation between p , w , and T :

$$p(t) = w(t) - T,$$

and then the assumption that $f(U)$ itself is some linear function of U :

$$w(t) = \alpha - \beta*U(t),$$

with α and β both positive constant parameters, so $dw/dU = -\beta < 0$, we get a linear relation between p and U :

$$p(t) = \alpha - T - \beta*U(t), \quad (\alpha, \beta > 0).$$

3.2 The Expectations-Augmented Phillips Relation

A more recent model of the relation between w and U is the "expectations-augmented version" of the Phillips relation:

$$w(t) = f(U(t)) + g*\pi(t), \quad (0 < g \leq 1),$$

where $\pi(t)$ is the expected rate of inflation. As emphasized by Milton Friedman, if an inflationary trend has been present long enough, workers factor some future inflation expectations into wage demands, so w should be an increasing function of π . Our equation relating rate of inflation p , unemployment U , and inflation expectation π is now

$$p(t) = \alpha - T - \beta*U(t) + g*\pi(t), \quad (0 < g \leq 1), \quad (\alpha, \beta > 0). \quad (1)$$

The "adaptive expectations hypothesis" is the equation

$$d\pi/dt = j*(p - \pi), \quad (0 < j \leq 1), \quad (2)$$

which simply says that if the present rate of inflation is greater than the present expected rate of inflation, the expected rate of inflation should increase with time. Likewise, if p falls short of π , then π is revised in the downward direction. The driving force is the difference between the actual and the expected rate of inflation.

3.3 The Feedback from Inflation to Unemployment $U(t)$

The pair of equations (1) and (2) should be solved together. After taking the the labor productivity T to be an exogenous constant, we have three time dependent variables: (p, U, π) with only two equations. We must choose one of these three to also be exogenous to make further progress. However if we make an assumption about the factors that directly influence unemployment and its dependence on time t , one approach is to take into account only monetary policy and its influence on the rate of change of unemployment.

Let $M(t)$ be the nominal money balance (the amount of money in the economy) and let $m(t) = (1/M)*dM/dt$ be the "rate of growth of the money balance". A simple model which relates U , p , and m is:

$$dU/dt = -k*(m - p), \quad (k > 0). \quad (3)$$

This relation says that if the money growth rate is larger than the inflation rate, then unemployment will decrease with time, and conversely, if the inflation rate is greater than the money growth rate, unemployment will tend to increase.

The difference $(m - p)$ is the rate of growth of "real money". Eqn. (3) asserts an "interaction" between the rate of inflation p and the "time path of unemployment $U(t)$ ", dU/dt .

3.4 The Time Path of π , the Expected Rate of Inflation, roots(A,B)

Starting with the three equations (1), (2), (3), we can condense the model using substitution. We first substitute (1) into (2) to get

$$d\pi/dt = j(\alpha - T - \beta U) - j(1-g)\pi. \quad (4)$$

To be able to use (3) we differentiate (4) wrt time t (recall $T = \text{const.}$)

$$d^2\pi/dt^2 = -j\beta dU/dt - j(1-g)d\pi/dt. \quad (5)$$

Using (3) for dU/dt in (5) results in

$$d^2\pi/dt^2 = j\beta k^*(m - p) - j(1-g)d\pi/dt. \quad (6)$$

Solve eqn (2) for p in terms of π :

$$p = (1/j)d\pi/dt + \pi. \quad (7)$$

Use (7) for p in (6);

$$d^2\pi/dt^2 + A*d\pi/dt + B*\pi = C, \quad (8)$$

where

$$A = \beta k + j(1-g), \quad B = j\beta k, \quad C = j\beta k m. \quad (9)$$

We have written a linear second order ordinary differential equation for π (here with constant positive coefficients, $A > 0$, $B > 0$, $C > 0$) in standard form, as we did in Dowling18A.wmxm.

The particular integral of (8) is $\pi = \text{constant}$, or $B*\pi = C$, or $\pi = C/B = m$, so in this model the intertemporal equilibrium value of the expected rate of inflation π equals the rate of growth of nominal money.

We adopt a notation based on Dowling's treatment in his Ch. 18 and on our work in Dowling18A.wmxm, Dowling18Afit.pdf. The characteristic roots are the solutions of the equation $r^2 + A*r + B = 0$, and are called r_1 and r_2 .

A Maxima function `croots (A,B)` is defined in `Econ2.mac` which returns a list $[r_1, r_2]$. We follow Chiang and Wainwright's conventions. Here we call `croots` with symbolic symbols A and B (unbound to values):

```
(%i4) fundef (croots);
```

```
(%o4) croots (%A, %B) := reverse ( map ( 'rhs, solve ( rr^2 + %A rr + %B = 0, rr ) ) )
```

```
(%i5) croots (A,B);
```

```
(%o5) [  $\frac{\sqrt{A^2 - 4 B} - A}{2}$ ,  $-\frac{\sqrt{A^2 - 4 B} + A}{2}$  ]
```

Returning to our ode for π , Eq. (8) above, we have distinct real roots if $A^2 > 4*B$, double real roots if $A^2 = 4*B$, and complex roots if $4*B > A^2$. There are no general reasons for any of these relations to always be in effect, so in general we can have all three types of solutions.

3.4.1 Case 1, Distinct Real Roots r_1 and r_2 , $A^2 > 4B$, $y = \pi$

Recall that both A and B are positive.

Case 1, distinct real roots, $A^2 > 4B$. Since $B > 0$, $(A^2 - 4B) < A^2$, and the square root is less than A, hence r_1 is negative, as is r_2 , which implies a dynamically stable equilibrium. The time path of $\pi(t)$ approaches $\pi_e = m$ for "large" positive values of t .

Here is an example with $A = 12$, $B = 1$, $C = 5$, $\pi_e = C/B = 5$. We let y stand for π . We use the Maxima functions `ode2` and `ic2`, as introduced in Dowling18A.wmx.

We first use `croots (A,B)` to verify that both roots are negative, and hence a stable solution will be found. [Recall that for this case, $A^2 > 4B$, the solution of the complementary equation is $y_c = \%A1*\exp(r1*t) + \%A2*\exp(r2*t)$.]

```
(%i6) croots (12, 1), numer;
```

```
(%o6) [-0.08392, -11.916]
```

Using `Lode2(y, t, type, A, B, C)`, defined in `Econ2.mac`, with `type = real, double, or complex`, (here `type = real`) to get a general solution with two arbitrary constants `%k1` and `%k2`:

```
(%i7) gsoln : Lode2(y, t, real, 12,1,5);
```

this assumes that $144 > 4$

```
(gsoln) y = %k1 %e( $\sqrt{35}-6$ ) t + %k2 %e( $-\sqrt{35}-6$ ) t + 5
```

For our first definite solution, we assume that at $t = 0$, $y = 15$ and $y' = -2$, and use `ic2`.

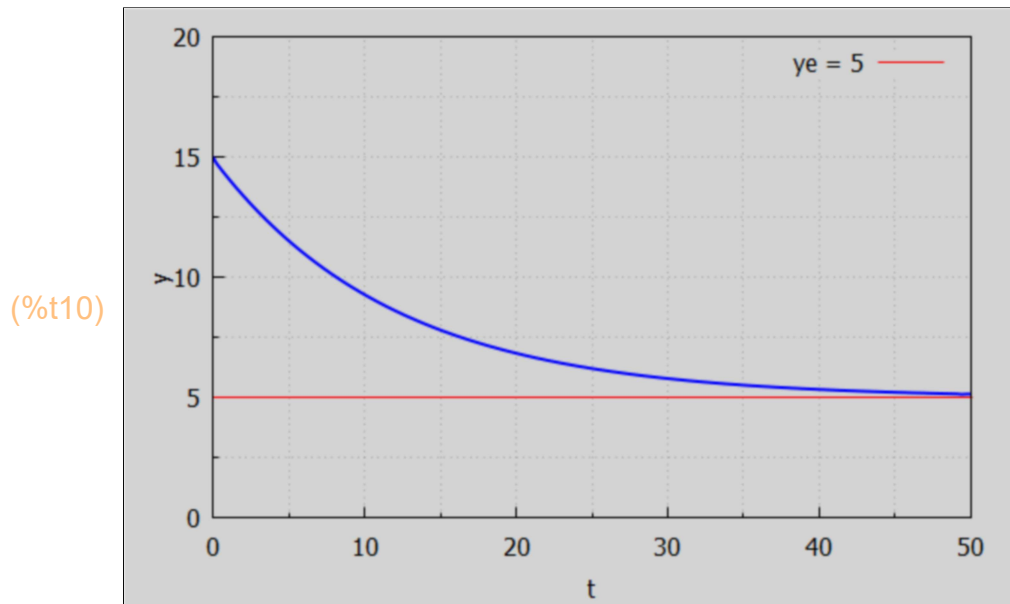
```
(%i8) dsoln1 : ic2(gsoln, t = 0, y = 15, 'diff (y,t) = -2);
```

```
(dsoln1) y =  $\frac{(29\sqrt{35}+175) \%e^{(\sqrt{35}-6) t}}{35} - \frac{(29\sqrt{35}-175) \%e^{(-\sqrt{35}-6) t}}{35} + 5$ 
```

```
(%i9) yex1 : rhs (dsoln1);
```

```
(yex1)  $\frac{(29\sqrt{35}+175) \%e^{(\sqrt{35}-6) t}}{35} - \frac{(29\sqrt{35}-175) \%e^{(-\sqrt{35}-6) t}}{35} + 5$ 
```

```
(%i10) wxdraw2d (xlabel = "t", ylabel = "y", yrange = [0, 20], explicit (yex1, t, 0, 50),
color = red, line_width = 1, key = "ye = 5", explicit (5,t, 0,50))$
```



For our second definite solution, we assume that at $t = 0$, $y = 2$ and $y' = 0.2$.

```
(%i11) dsoln2 : ic2(gsoln,t = 0,y = 2,'diff (y,t) = 0.2);
```

```
(dsoln2) 
$$y = -\frac{(89\sqrt{35}+525)\%e^{(\sqrt{35}-6)t}}{350} + \frac{(89\sqrt{35}-525)\%e^{(-\sqrt{35}-6)t}}{350} + 5$$

```

```
(%i12) yex2 : rhs (dsoln2);
```

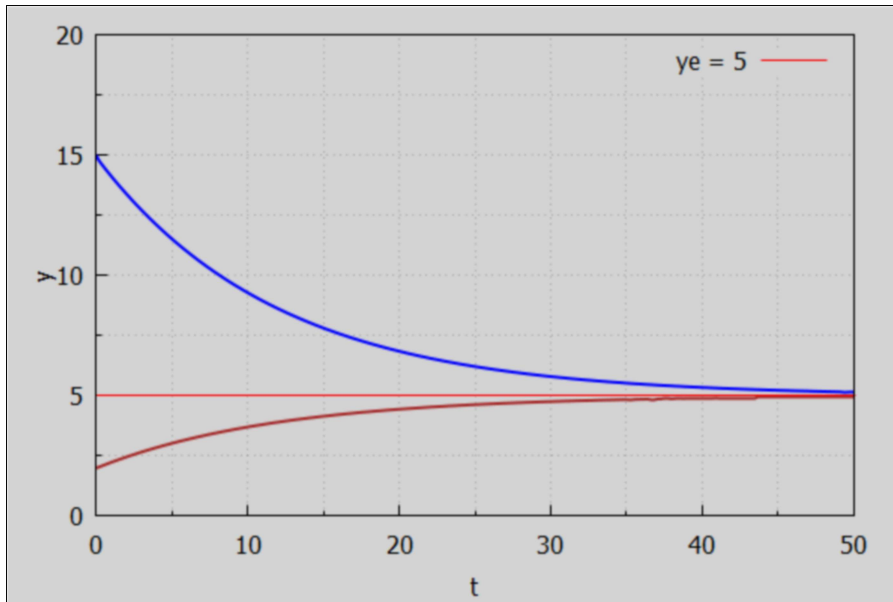
```
(yex2) 
$$-\frac{(89\sqrt{35}+525)\%e^{(\sqrt{35}-6)t}}{350} + \frac{(89\sqrt{35}-525)\%e^{(-\sqrt{35}-6)t}}{350} + 5$$

```

Show both solutions on the same plot.


```
(%i13) wxdraw2d (xlabel = "t", ylabel = "y", xrange = [0, 50], explicit (yex1, t, 0, 50),
color = brown, explicit (yex2, t, 0, 50),
color = red, line_width = 1, key = "ye = 5", explicit (5,t, 0,50))$
```

(%t13)



As Dowling discusses, the complementary solution to the linear second order ordinary differential equation with real characteristic roots r_1 and r_2 has the general form

$$k_1 \exp(r_1 t) + k_2 \exp(r_2 t)$$

which is why we need both r_1 and r_2 to be negative (in this real roots case) to have convergence to $\pi e = 5$. Let us construct such a solution using this form as a starting point, and looking for the same solution as we found above with y_{ex2} (at $t = 0$, $y = 2$, $y' = 0.2$). This is an alternative to using `ode2` or `Lode2` for the two real distinct roots case.

```
(%i14) [r1, r2] : croots (12, 1), numer;
(%o14) [-0.08392, -11.916]
```

We have to use `%k1` and `%k2` as the arbitrary constants in `gsoln` in order to get `ic2` to not return an empty bracket `[]`.

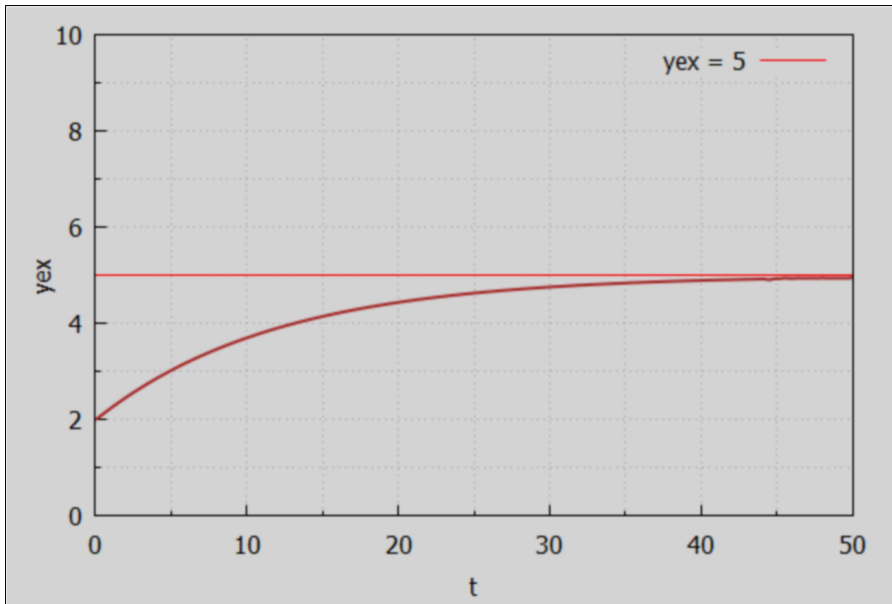
```
(%i15) gsoln : y = 5 + %k1*exp (r1*t) + %k2*exp (r2*t);
(gsoln) y=%k1 %e-0.08392 t+%k2 %e-11.916 t+5
```

```
(%i16) dsoln : ic2(gsoln, t = 0, y = 2, 'diff(y, t) = 0.2), numer;
(dsoln) y=-3.0044 %e-0.08392 t+0.0043746 %e-11.916 t+5
```

```
(%i17) yex : rhs (dsoln);
(yex) -3.0044 %e-0.08392 t+0.0043746 %e-11.916 t+5
```

```
(%i18) wxdraw2d (xlabel = "t", ylabel = "yex", yrange = [0, 10],
color = brown, explicit (yex, t, 0, 50),
color = red, line_width = 1, key = "yex = 5", explicit (5, t, 0, 50))$
```

```
(%t18)
```



3.4.2 Case 2: Double Real Root, $A^2 = 4*B$, $y = \pi$

If $A^2 = 4*B$, we have one real root $r = -A/2$.

```
(%i19) croots (A,B);
```

```
(%o19) [ $\frac{\sqrt{A^2 - 4B} - A}{2}$ ,  $-\frac{\sqrt{A^2 - 4B} + A}{2}$ ]
```

```
(%i20) ratsubst (4*B, A^2, %);
```

```
(%o20) [ $-\frac{A}{2}$ ,  $-\frac{A}{2}$ ]
```

If $A > 0$, the single real root is negative, and we have convergence to a stable solution πe , and conversely, if $A < 0$, the single real root is positive and we have an unstable evolution in time of $\pi(t)$.

3.4.3 Case 3: Complex Roots, $4*B > A^2$.

In this case, $[r1,r2] = [g + \%i*h, g - \%i*h]$, with $g = -A/2$, $h = (1/2)*\text{sqrt}(4*B - A^2) > 0$.

The solution of the complementary equation is

$yc = \exp(g*t)*[\text{sum of cosine and sine terms}]$, or

$yc = \exp(-A/2)*(\%k1*\sin(h*t) + \%k2*\cos(h*t))$.

We can use our function Lode2(y,t,type,A,B,C) where type (here) is complex. We introduced Lode2 in Dowling18A.wmx.

(%i21) `Lode2 (y,t, complex, A, B, C);`

this assumes that $4 B > A^2$

(%o21)
$$y = e^{-\frac{A t}{2}} \left(\%k1 \sin\left(\frac{\sqrt{4 B - A^2} t}{2}\right) + \%k2 \cos\left(\frac{\sqrt{4 B - A^2} t}{2}\right) \right) + \frac{C}{B}$$

In this case, the real part of the complex roots is $g = -A/2$, (the square root term is pure imaginary, the $-A/2$ term is the real part of each root) and, as in Case 2, we have a , stable converging solution if $A > 0$, otherwise an unstable solution.

Chiang and Wainwright (p. 536) consider a complex root case, starting with the basic equations (in the first eqn, we took $\alpha - T = 1/6$, which says that $T < \alpha$):

$$p = 1/6 - 3 U + \pi,$$

$$d\pi/dt = (3/4)*(p - \pi),$$

$$dU/dt = -(1/2)*(m - p).$$

Then the constants relevant for the values of A and B are $\beta = 3$, $g = 1$, $j = 3/4$, and $k = 1/2$. Then $A = 3/2 > 0$ hence convergent, $B = 9/8$, $C = (9/8)*m$, $A^2 = 9/4$, $4*B = 9/2 > A^2$, hence complex.

We can use our Lode2 function, defined in Econ2.mac, and used in Dowling18A.wmx, with the syntax Lode2 (y, t, type, A, B, C), with type = real, double, or complex (here complex). We first use croots(A,B) with $A = 3/2$, $B = 9/8$:

(%i22) `croots (3/2, 9/8);`

(%o22)
$$\left[\frac{3 \%i - 3}{4}, -\frac{3 \%i + 3}{4} \right]$$

(%i23) `ypiSoln : Lode2(y, t, complex, 3/2, 9/8, 9*m/8);`

this assumes that $\frac{9}{2} > \frac{9}{4}$

(ypiSoln)
$$y = \left(\%k1 \sin\left(\frac{3 t}{4}\right) + \%k2 \cos\left(\frac{3 t}{4}\right) \right) \%e^{-\frac{3 t}{4}} + m$$

(%i24) `ypi : rhs (ypiSoln);`

(ypi)
$$\left(\%k1 \sin\left(\frac{3 t}{4}\right) + \%k2 \cos\left(\frac{3 t}{4}\right) \right) \%e^{-\frac{3 t}{4}} + m$$

Solving the second of the three starting equations for p , we get
 $p = (4/3) \cdot d\pi/dt + \pi$.

(%i25) $p : (4/3) \cdot \text{diff}(y\pi, t) + y\pi, \text{ratsimp}, \text{expand};$

$$(p) \quad -\%k2 \sin\left(\frac{3t}{4}\right) \%e^{-\frac{3t}{4}} + \%k1 \cos\left(\frac{3t}{4}\right) \%e^{-\frac{3t}{4}} + m$$

Like the expected rate of inflation π , the actual rate of inflation p has a fluctuating time path converging to the equilibrium value m .

Solving the first of our starting equations for U :

$$U = (1/3) \cdot (\pi - p) + 1/18.$$

(%i26) $U : (y\pi - p)/3 + 1/18;$

$$(U) \quad \left(\%k1 \sin\left(\frac{3t}{4}\right) + \%k2 \cos\left(\frac{3t}{4}\right) \right) \%e^{-\frac{3t}{4}} + \%k2 \sin\left(\frac{3t}{4}\right) \%e^{-\frac{3t}{4}} - \%k1 \cos\left(\frac{3t}{4}\right) \%e^{-\frac{3t}{4}} \Big/ 3 + \frac{1}{18}$$

The time path of "rate of unemployment" $U(t)$ is a damped fluctuating expression which eventually reaches $U_e = 1/18$.

3.4.4 Long Run Unemployment Example

We see from this complex root example a prediction that the rate of unemployment reaches an equilibrium value which does not depend on the monetary policy parameter m .

Quoting p. 537 of Chiang and Wainwright:

"Because the intertemporal equilibrium values of π and p are both equal to the monetary-policy parameter m (the rate of growth of nominal money M : $m = (1/M) \cdot dM/dt$), the value of m provides the axis around which the time paths of π and p fluctuate. If a change occurs in m , a new equilibrium value of π and p will immediately replace the old one, and whatever values the π and p variables happen to take at the moment of the monetary-policy change will become the initial values from which the new π and p paths emanate."

"In contrast, the intertemporal equilibrium U_e does not depend on m . In our model, U converges to $1/18$ regardless of the rate of growth of nominal money, and hence regardless of the equilibrium rate of inflation p . This constant equilibrium value of U is referred to as the "natural rate of unemployment". The fact that the natural rate of unemployment is consistent with any equilibrium rate of inflation p can be represented in the (U, p) plane by a vertical straight line ($U = \text{const}$) parallel to the vertical p axis. That vertical line is known as the "long-run Phillips curve".

In the U.S. the natural rate of unemployment (NRU) is about 5%. A "natural rate of unemployment" greater than zero exists due to the natural churn in job expectations, short term employment needs, and the search for more rewarding jobs.

Let's draw the long run Phillips Curve.

```
(%i27) wxdraw2d (xlabel = "Unemployment Rate (%)", xrange = [1, 9], yrange = [-3, 9],
  ylabel = "Inflation Rate (%)", title = "Long Run Phillips Curve",
  parametric (5, yy, yy, -3, 9), line_width = 1, color = red, explicit (2, x, 1, 5),
  explicit (6, x, 1, 5), color = black, explicit(0,x,1,9), points ([[5,2],[5,6]]))$
```

(%t27)



3.5 The Phillips Curve in Context

We quote a discussion from:

<https://courses.lumenlearning.com/boundless-economics/chapter/the-relationship-between-inflation-and-unemployment/>

"Key Points

"The relationship between inflation rates and unemployment rates is inverse. Graphically, this means the short-run Phillips curve is L-shaped."

"A.W. Phillips published his observations about the inverse correlation between wage changes and unemployment in Great Britain in 1958. This relationship was found to hold true for other industrial countries, as well."

"From 1861 until the late 1960's, the Phillips curve predicted rates of inflation and rates of unemployment. However, from the 1970's and 1980's onward, rates of inflation and unemployment differed from the Phillips curve's prediction. The relationship between the two variables became unstable."

"Key Terms

Phillips curve: A graph that shows the inverse relationship between the rate of unemployment and the rate of inflation in an economy.

stagflation: Inflation accompanied by stagnant growth, unemployment, or recession."

"The Phillips curve relates the rate of inflation with the rate of unemployment. The Phillips curve argues that unemployment and inflation are inversely related: as levels of unemployment decrease, inflation increases. The relationship, however, is not linear. Graphically, the short-run Phillips curve traces an L-shape when the unemployment rate is on the x-axis and the inflation rate is on the y-axis."

3.5.1 Short Run Phillips Curve

We can construct our own plot of a "theoretical Phillips curve", which is designed to be similar to the example shown in the online webpage.

```
(%i29) kill(a,b)$
```

```
pp(x) := -a + b/cosh(x) - x;
```

```
(%o29) pp(x) := -a +  $\frac{b}{\cosh(x)}$  - x
```

```
(%i30) psoln : solve([pp(3) = 6, pp(5) = 2], [a,b]), numer;
```

```
(psoln) [[a = -6.6861, b = 23.296]]
```

```
(%i32) kill(U)$
      IR : at(pp(U), psoln[1]);
(IR)  
$$\frac{23.296}{\cosh(U)} - U + 6.6861$$

```

```
(%i34) [xmin, xmax,ymin,ymax] : [1,10,-5,10]$
wxdraw2d (xlabel = "Unemployment Rate (%)",
         ylabel = "Inflation Rate (%)", xrange = [xmin,xmax], yrange = [ymin,ymax],
         title = "Short Run Phillips Curve",
         explicit (IR,U,xmin,xmax), color = red, line_width = 1,
         explicit (6, U, xmin, 3),explicit (2, U, xmin, 5),
         color = black, explicit(0,U, xmin, xmax), parametric(3,yy,yy, ymin, 6),
         parametric(5,yy,yy, ymin, 2), points ([ [3,6], [5,2] ]))$
```

(%t34)



"Short Run Phillips Curve: The Phillips curve shows the inverse trade-off between inflation and unemployment. As one increases, the other must decrease. In this example plot, an economy can either experience 3% unemployment at the cost of 6% inflation, or increase unemployment to 5% to bring down the inflation levels to 2%."

"History of the Phillips Curve"

"The early idea for the Phillips curve was proposed in 1958 by economist A.W. Phillips. In his original paper, Phillips tracked wage changes and unemployment changes in Great Britain from 1861 to 1957, and found that there was a stable, inverse relationship between wages and unemployment. This correlation between wage changes and unemployment seemed to hold for Great Britain and for other industrial countries. In 1960, economists Paul Samuelson and Robert Solow expanded this work to reflect the relationship between inflation and unemployment. Because wages are the largest components of prices, inflation (rather than wage changes) could be inversely linked to unemployment."

"The theory of the Phillips curve seemed stable and predictable. Data from the 1960's modeled the trade-off between unemployment and inflation fairly well. The Phillips curve offered potential economic policy outcomes: fiscal and monetary policy could be used to achieve full employment at the cost of higher price levels, or to lower inflation at the cost of lowered employment. However, when governments attempted to use the Phillips curve to control unemployment and inflation, the relationship fell apart. Data from the 1970's and onward did not follow the trend of the classic Phillips curve. For many years, both the rate of inflation and the rate of unemployment were higher than the Phillips curve would have predicted, a phenomenon known as "stagflation. " Ultimately, the Phillips curve was proved to be unstable, and therefore, not usable for policy purposes."

The Relationship Between the Phillips Curve and AD-AS Curve

Changes in aggregate demand cause movements along the Phillips curve, all other variables held constant. Aggregate demand (AD) is the total demand for final goods and services in the economy at a given time and price level.

"The rate of unemployment and rate of inflation found in the Phillips curve correspond to the real GDP and price level of aggregate demand.

Changes in aggregate demand translate as movements along the Phillips curve.

If there is an increase in aggregate demand, such as what is experienced during demand-pull inflation, there will be an upward movement along the Phillips curve. As aggregate demand increases, real GDP and price level increase, which lowers the unemployment rate and increases inflation."

"The Phillips curve shows the inverse trade-off between rates of inflation and rates of unemployment. If unemployment is high, inflation will be low; if unemployment is low, inflation will be high."

Points on the Phillips Curve must correspond to points on the AD-AS Curve. The Phillips curve is the relationship between inflation, which affects the price level aspect of aggregate demand, and unemployment, which is related to aggregate supply (AS). Consequently,

"To see the connection more clearly, consider the example illustrated by" the two plots we construct below. "Let's assume that aggregate supply, AS, is stationary, and that aggregate demand starts with the curve, AD1. There is an initial equilibrium price level and real GDP output at point A. Now, imagine there are increases in aggregate demand, causing the curve to shift right to curves AD2 through AD4. As aggregate demand increases, unemployment decreases as more workers are hired, real GDP output increases, and the price level increases; this situation describes a demand-pull inflation scenario."

"Phillips Curve and Aggregate Demand: As aggregate demand increases from AD1 to AD4, the price level and real GDP increases. This translates to corresponding movements along the Phillips curve as inflation increases and unemployment decreases."

Let's make an AD-AS plot with fixed supply and shifting demand.

3.5.2 Plot of Shifting Demand with Fixed Supply

If we model the fixed supply curve as a straight line (for simplicity) $P = a*Q + b$, with P the price level and Q the corresponding quantity supplied, we look for the parameter values a and b such that when $P = 100$, $Q = 5$, and when $P = 110$, $Q = 10$.

```
(%i35) solve ([100 = 5*a + b, 110 = 10*a + b],[a,b]);
```

```
(%o35) [[a=2,b=90]]
```

Our supply curve is then described by the linear relation $P_s = 2*Q + 90$. which has a slope $dP_s/dx = 2$. For convenience let's use a downward sloping demand curve which is also a straight line $P_d = c*Q + d$, and let the line P_d be orthogonal to P_s . A vector directed along a line $y = a*x + b$ is represented by the "x component" y_x and the "y component" y_y as a list $[y_x, y_y] = [x_2 - x_1, y_2 - y_1] = [x_2 - x_1, a*(x_2 - x_1)] = (x_2 - x_1)*[1, a]$. A vector directed along a second line $y = c*x + d$ is the list $[x_2 - x_1, c*(x_2 - x_1)] = (x_2 - x_1)*[1, c]$. For these two direction vectors to be orthogonal, the scalar dot product must be zero.

For example, represent the direction vector A_{vec} by the list of x and y components A_x and A_y , and represent the direction vector B_{vec} by the list of x and y components B_x and B_y .

```
(%i39) kill(Ax,Ay,Bx,By)$
      Avec : [Ax,Ay];
      Bvec : [Bx,By];
      AdotB : Avec . Bvec;
(Avec) [Ax,Ay]
(Bvec) [Bx,By]
(AdotB) Ay By + Ax Bx
```

If the scalar dot product is equal to zero, these two direction vectors are orthogonal (directed at right angles to each other). Note the use of a single dot (period) between the lists to find the "dot product" of these two lists representing two direction vectors. In the Maxima manual, under Dot, you find:

"The operator . represents noncommutative multiplication and scalar product."

The use of lists of components to represent vectors in calculations is not documented in the Manual.

```
(%i40) solve([1,a] . [1,c] = 0, c);
(%o40) [c = - 1/a]
```

So we choose the slope of the demand curve line to be $-1/2$, and use $P_d = -Q/2 + d$, with d to be chosen to have a particular (Q,P) point be on the line. If we want the point $(Q,P) = (5,100)$ to be on the line, then we need d to be

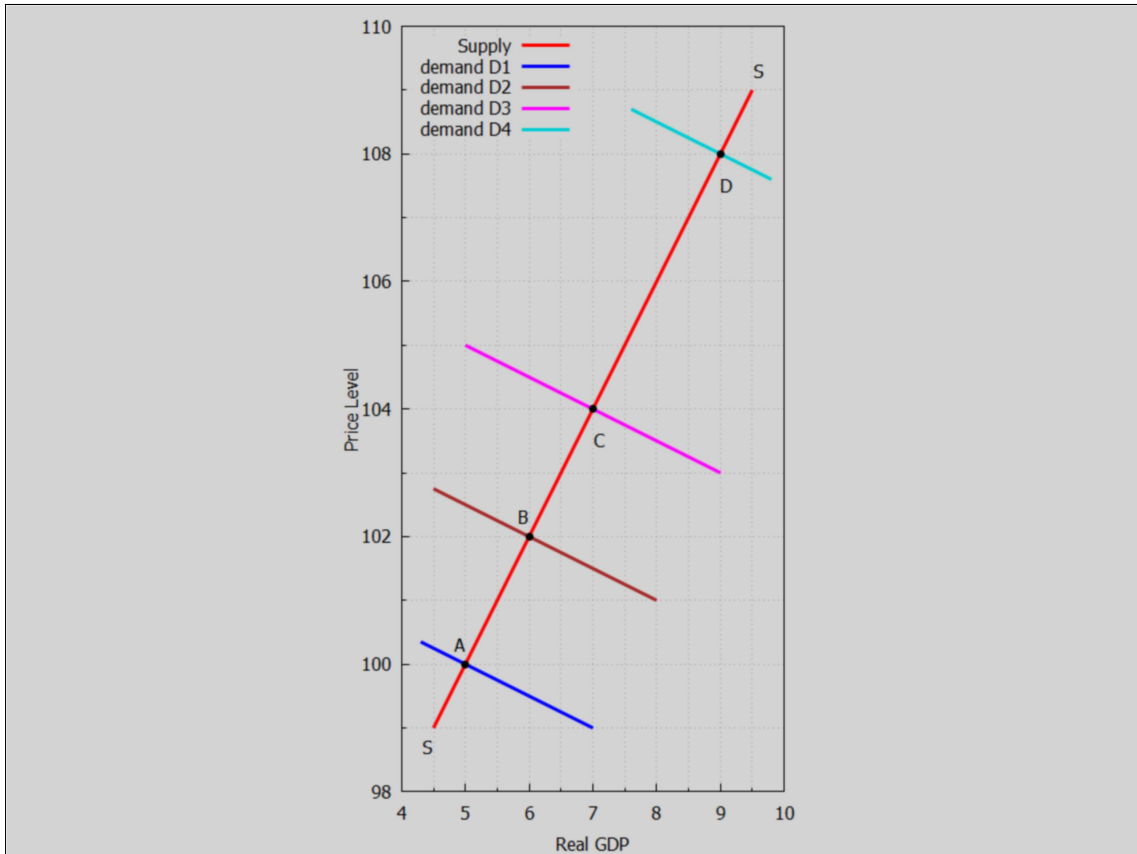
```
(%i41) solve(100 = -5/2 + d, d), numer;
(%o41) [d = 102.5]
```

We do that calculation for all the points in the list SDpts.

```
(%i42) SDpts : [[5,100],[6,102],[7,104],[9,108] ];
(SDpts) [[5,100],[6,102],[7,104],[9,108]]
```

```
(%i43) wxdraw2d(xlabel = "Real GDP", ylabel = "Price Level", yrange = [98,110],
  proportional_axes = 'xy,key_pos = top_left, line_width = 3,
  xrange = [4,10], color = red, key = "Supply", explicit (2*x+90,x,4.5, 9.5),
  color = blue, key = "demand D1", explicit (-x/2 + 102.5,x,4.3,7),color = brown,
  key = "demand D2", explicit(-x/2 + 105,x,4.5,8),color = magenta, key = "demand D3",
  explicit (-x/2 + 107.5, x, 5,9),color = dark_turquoise,key = "demand D4",
  explicit (-x/2 + 112.5,x, 7.6, 9.8),color = black,key = "", points (SDpts),
  label (["A", 4.9, 100.3], ["B",5.9,102.3], ["C",7.1,103.5], ["D",9.1,107.5],
  ["S",9.6,109.3], ["S",4.4,98.7])), wxplot_size=[1024,768];
```

```
(%t43)
```



```
(%o43)
```

"Phillips Curve and Aggregate Demand: As aggregate demand increases from AD1 to AD4, [curve A to curve D on this plot] the price level and real GDP increases. This translates to corresponding movements along the Phillips curve as inflation increases and unemployment decreases."

3.5.3 Plot of Phillips Curve with Shifting Demand Points

We use Maxima's interpolation functions to draw an approximate Phillips Curve from sample data. We define pts to be a list of elements [Unemployment-rate, Price Level], each of which respectively correspond to the points (A,B,C,D) on the supply-demand curve drawn above.

```
(%i44) pts : [[2,8], [3,4], [4,2], [6,0.6],[8,0]];
(pts)  [[2,8],[3,4],[4,2],[6,0.6],[8,0]]
```

The contributed Maxima package `interpol.mac` has a function `lagrange(points)` defined which creates a "Lagrange interpolation" on the points provided.

```
(%i45) load ("interpol");
(%o45) C:/maxima-5.43.2/share/maxima/5.43.2/share/numeric/interpol.mac
```

```
(%i46) lagrange (pts);
```

```
(%o46) -0.0125 (x-8) (x-4) (x-3) (x-2) +  $\frac{(x-8)(x-6)(x-3)(x-2)}{8}$  -
 $\frac{4(x-8)(x-6)(x-4)(x-2)}{15}$  -  $\frac{(3-x)(x-8)(x-6)(x-4)}{6}$ 
```

We can then define a Maxima function `f1(x)` by placing two single quotes (') in front of %.

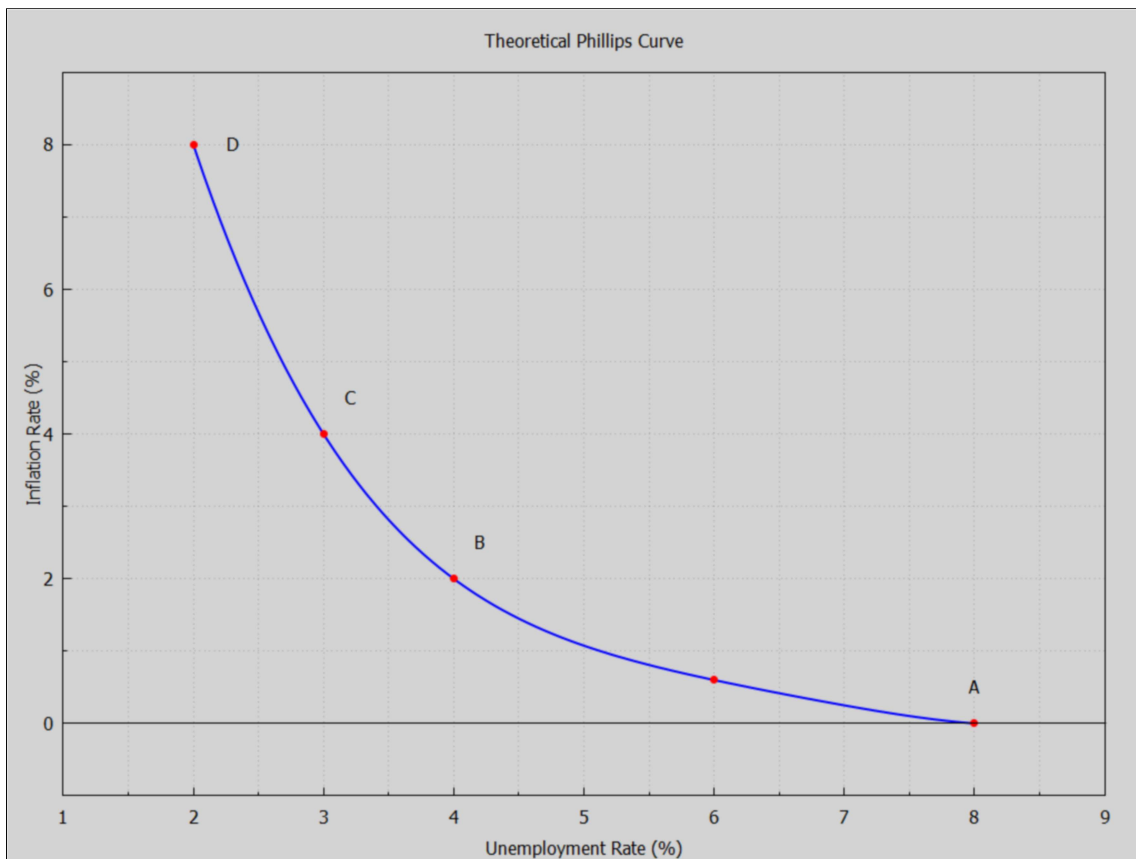
```
(%i47) f1(x) := "%;
```

```
(%o47) f1(x) := -0.0125 (x-8) (x-4) (x-3) (x-2) +
 $\frac{(x-8)(x-6)(x-3)(x-2)}{8}$  -  $\frac{4(x-8)(x-6)(x-4)(x-2)}{15}$  -
 $\frac{(3-x)(x-8)(x-6)(x-4)}{6}$ 
```

We now show the points on this theoretical Phillips curve which correspond to the points labeled (A,B,C,D) on the AD-AS curve drawn above.

```
(%i48) wxdraw2d (xlabel = "Unemployment Rate (%)", xrange = [1, 9], yrange = [-1, 9],
  ylabel = "Inflation Rate (%)", title = "Theoretical Phillips Curve",
  explicit (f1(x), x, 2, 8), color = red, points (pts),
  color = black, line_width = 1, explicit(0, x, 1, 9),
  label(["A", 8, 0.5], ["B", 4.2, 2.5], ["C", 3.2, 4.5], ["D", 2.3, 8])), wxplot_size = [1024, 768];
```

```
(%t48)
```



```
(%o48)
```

"Phillips Curve and Aggregate Demand: As aggregate demand increases from AD1(A) to AD4 (D), the price level increases and the real GDP increases. This translates to corresponding movements along the Phillips curve as inflation increases and unemployment decreases."

3.5.4 Unstable Inflation-Unemployment Example

From the webpage quoted above:

"The theory of the Phillips curve seemed stable and predictable. Data from the 1960's modeled the trade-off between unemployment and inflation fairly well. The Phillips curve offered potential economic policy outcomes: fiscal and monetary policy could be used to achieve full employment at the cost of higher price levels, or to lower inflation at the cost of lowered employment. However, when governments attempted to use the Phillips curve to control unemployment and inflation, the relationship fell apart. Data from the 1970's and onward did not follow the trend of the classic Phillips curve. For many years, both the rate of inflation and the rate of unemployment were higher than the Phillips curve would have predicted, a phenomenon known as "stagflation." Ultimately, the Phillips curve was proved to be unstable, and therefore, not usable for policy purposes."

The quoted webpage has a plot in which the relation between inflation and unemployment looks random, and they remark:

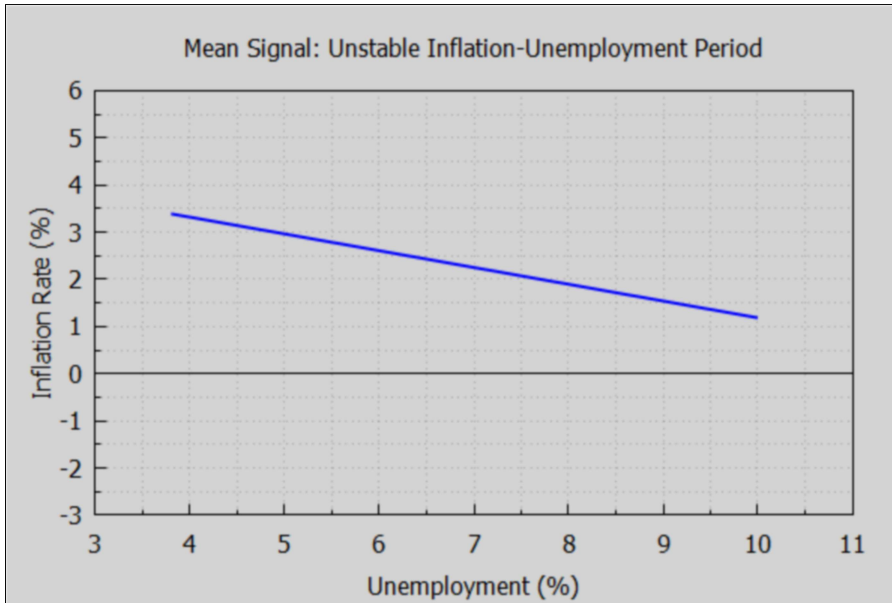
"US Phillips Curve (2000 – 2013): The data points in this graph span every month from January 2000 until April 2013. They do not form the classic L-shape the short-run Phillips curve would predict. Although it was shown to be stable from the 1860's until the 1960's, the Phillips curve relationship became unstable – and unusable for policy-making – in the 1970's."

We will use Maxima tools to produce a similar plot, using random numbers to add white noise to the mean value.

We first make of plot of the mean signal only, using the function shown on the plot, which we define as the Maxima function $f(x)$ here. To match the webpage plot, we choose to draw the line over the interval $U = 3.8$ to $U = 10$.

```
(%i50) f(x) := -0.3556*x + 4.7393$
wxdraw2d(xlabel = "Unemployment (%)", ylabel = "Inflation Rate (%)",
  xrange = [3,11], yrange = [-3, 6],
  title = "Mean Signal: Unstable Inflation-Unemployment Period",
  explicit (f(x), x, 3.8,10), color = black,line_width = 1,
  explicit (0,x,3,11))$
```

(%t50)



The contributed Maxima package `distrib` contains a function we can use here. `random_normal(m, s)` returns a random number selected from a normal distribution with mean value m and standard deviation s . `random_normal(m, s, n)` returns a list of n such random numbers. Use `load("distrib")` first to be able to use this function.

```
(%i51) load("distrib");
(%o51) C:/maxima-5.43.2/share/maxima/5.43.2/share/distrib/distrib.mac
```

For example, here is a list of ten random numbers taken from a normal distribution with a mean value equal to zero (0) and with a standard deviation equal to unity (1).

```
(%i52) makelist(random_normal(0,1), j, 1,10);
(%o52) [0.74527, 1.2838, -0.85789, -0.48276, -0.18091, 0.24598, 0.12013, -
0.73785, -0.37396, -0.66147]
```

We can get ten numbers as a list by adding the option `n = 10` to `random_normal`:

```
(%i53) random_normal(0,1,10);
(%o53) [1.0847, -0.43546, -1.1128, -1.2033, 1.0591, 0.88385, 1.2077, -
1.1162, -0.045682, -0.73839]
```

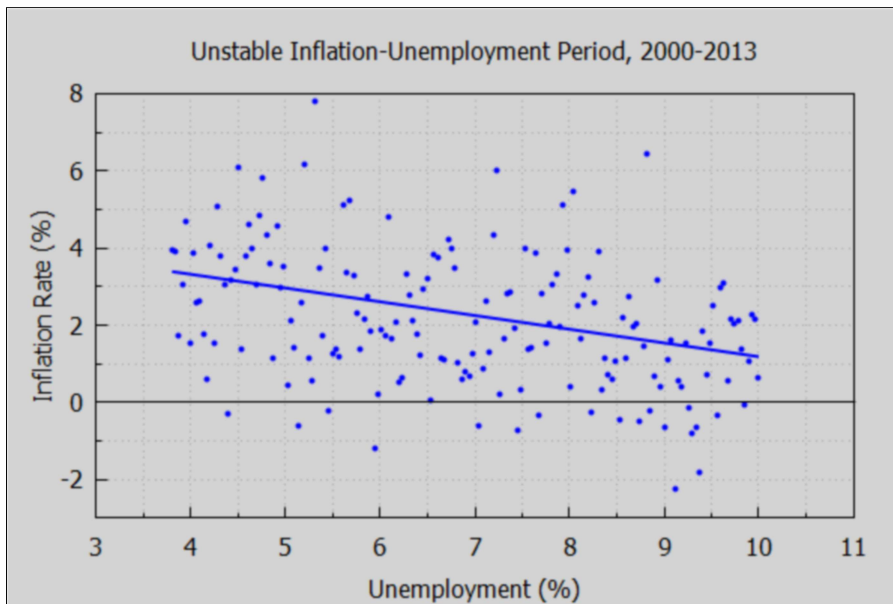
We now create a noisy signal by adding random numbers taken from a normal distribution with a mean value of 0 and a standard deviation 1.7 to the mean signal $f(x)$ we plotted above. Let dx be the small change in U between white noise points; this will depend on the parameter num (the number of points).

```
(%i57) num : 168$
dx : (10 - 3.8)/num$
ss : 1.7$
whiteNoise : makelist([3.8 + j*dx, f(3.8 + j*dx) + random_normal(0,ss)],j,0,num)$
```

Here we show this white noise as small points.

```
(%i58) wxdraw2d(xlabel = "Unemployment (%)", ylabel = "Inflation Rate (%)",
xrange = [3,11], yrange = [-3, 8],
title = "Unstable Inflation-Unemployment Period, 2000-2013",
explicit (f(x), x, 3.8,10), point_size = 0.5,
points (whiteNoise), color = black,line_width = 1,
explicit (0,x,3,11))$
```

(%t58)



Repeating the conclusions:

"US Phillips Curve (2000 – 2013): The data points in this graph span every month from January 2000 until April 2013. They do not form the classic L-shape the short-run Phillips curve would predict. Although it was shown to be stable from the 1860's until the 1960's, the Phillips curve relationship became unstable – and unusable for policy-making – in the 1970's."

4 *Differential Equations with a Variable Term*

We follow some of the discussion in Chiang and Wainwright, Sec. 16.6.

4.1 Example 1: $y'' + 5y' + 3y = 6t^2 - t - 1$

Find a solution of the second order ODE

$$y''(t) + 5y'(t) + 3y(t) = 6t^2 - t - 1$$

This is not a linear ordinary differential equation (ode) with constant coefficients of the form $y'' + Ay' + By = C$, because C is not a constant, so we can't use Lode2, but we can use ode2.

```
(%i59) croots(5, 3), numer;
```

```
(%o59) [-0.69722, -4.3028]
```

```
(%i61) de : 'diff (y, t, 2) + 5*'diff (y,t) + 3*y = 6*t^2 - t -1;
```

```
gsoln : ode2 (de, y, t);
```

```
(de) 
$$\frac{d^2}{dt^2} y + 5 \left( \frac{d}{dt} y \right) + 3y = 6t^2 - t - 1$$

```

```
(gsoln) 
$$y = \%k1 \%e^{\frac{(\sqrt{13}-5)t}{2}} + \%k2 \%e^{\frac{(-\sqrt{13}-5)t}{2}} + 2t^2 - 7t + 10$$

```

The "particular solution" $yp = 2t^2 - 7t + 10$.

We now assume $y(0) = 3$, $y'(0) = 0.5$, to find a definite solution.

```
(%i62) dsoln : ic2 (gsoln, t = 0, y = 3, 'diff (y, t) = 0.5), numer;
```

```
(dsoln) 
$$y = -6.2735 \%e^{-0.69722 t} - 0.7265 \%e^{-4.3028 t} + 2t^2 - 7t + 10$$

```

```
(%i63) yex1 : rhs (dsoln);
```

```
(yex1) 
$$-6.2735 \%e^{-0.69722 t} - 0.7265 \%e^{-4.3028 t} + 2t^2 - 7t + 10$$

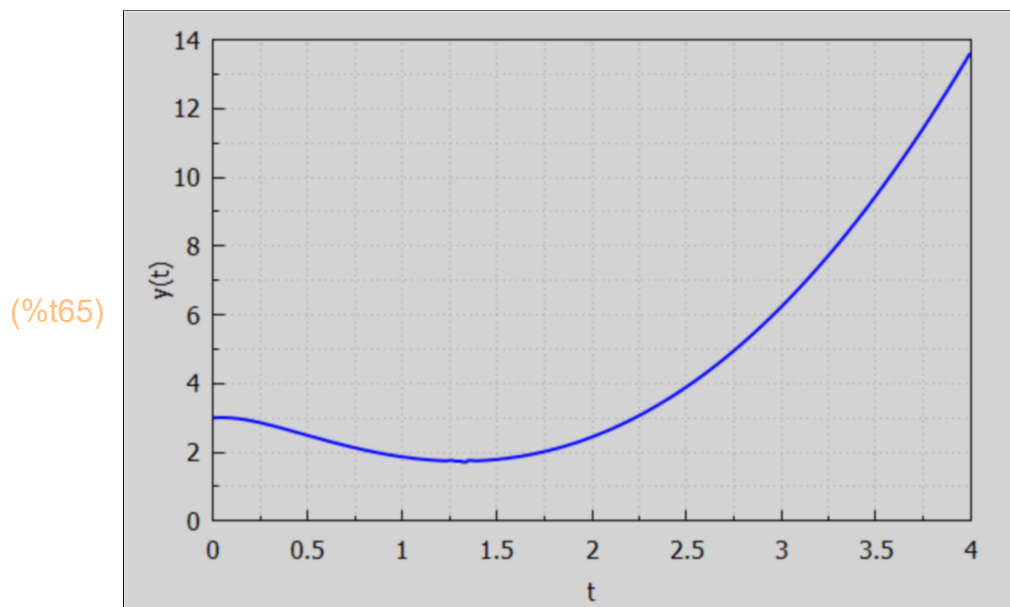
```

```
(%i64) Ex1(t) := "yex1";
```

```
(%o64) 
$$Ex1(t) := -6.2735 \%e^{-0.69722 t} - 0.7265 \%e^{-4.3028 t} + 2t^2 - 7t + 10$$

```

```
(%i65) wxdraw2d (xlabel = "t", ylabel = "y(t)", yrange = [0,14],
explicit (Ex1(t), t, 0, 4))$
```



We can look for the value of t for which $y'(t) = 0$ and obtain the minimum value of y .

```
(%i66) Ex1(0);
```

```
(%o66) 3.0
```

```
(%i67) map ('Ex1, [1.1, 1.2, 1.3,1.4]);
```

```
(%o67) [1.8, 1.7585, 1.7429, 1.7546]
```

So roughly, $t_{\min} = 1.3$. We can get a more accurate value of t_{\min} by looking for the value of t for which $dEx1(t)/dt = 0$.

```
(%i68) dy : diff(Ex1(t), t);
```

```
(dy) 4.374 %e-0.69722 t + 3.126 %e-4.3028 t + 4 t - 7
```

solve can't handle this type of expression, so use purely numerical method using `find_root(expr, var, v1, v2)`.

```
(%i69) tmin : find_root (dy, t, 1.2, 1.4);
```

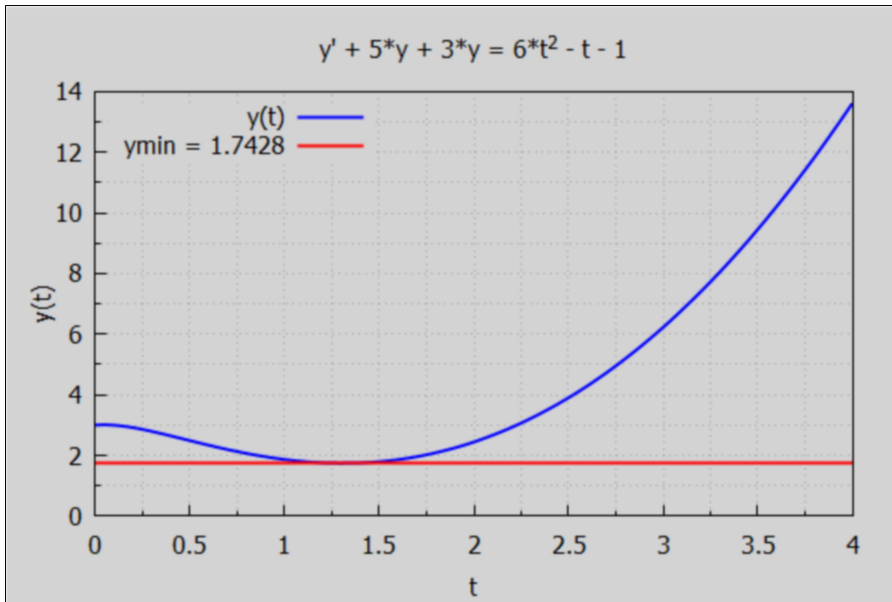
```
(tmin) 1.3078
```

```
(%i70) ymin : Ex1(tmin);
```

```
(ymin) 1.7428
```

```
(%i71) wxdraw2d (xlabel = "t", ylabel = "y(t)", yrange = [0,14], key_pos = top_left,
title = "y'' + 5*y' + 3*y = 6*t^2 - t - 1", key = "y(t)",
explicit (Ex1(t), t, 0, 4), color = red, key = sconcat("ymin = ", ymin),explicit (ymin, t, 0, 4))$
```

(%t71)



4.2 Example 3: $y'' + 3y' - 4y = 2 \exp(-4t)$

Find the solution to the second order ODE

$$y''(t) + 3y'(t) - 4y = 2 \exp(-4t).$$

```
(%i72) croots (3,-4);
```

```
(%o72) [-4, 1]
```

One of the real distinct roots of the characteristic equation is positive, and will dominate the solution for long enough times, leading to an unstable solution.

```
(%i74) de : 'diff (y,t,2) + 3*'diff (y,t) - 4*y = 2*exp (-4*t);
```

```
gsoln : ode2 (de, y, t);
```

```
(de) 
$$\frac{d^2}{dt^2} y + 3 \left( \frac{d}{dt} y \right) - 4y = 2 e^{-4t}$$

```

```
(gsoln) 
$$y = \%k1 e^t - \frac{(10t+2) e^{-4t}}{25} + \%k2 e^{-4t}$$

```

Look for a definite solution for which $y(0) = 5$, $y'(0) = -5$.

```
(%i75) dsoln : ic2 (gsoln, t = 0, y = 5, 'diff (y,t) = -5);
```

```
(dsoln) 
$$y = \frac{77 e^t}{25} - \frac{(10t+2) e^{-4t}}{25} + 2 e^{-4t}$$

```

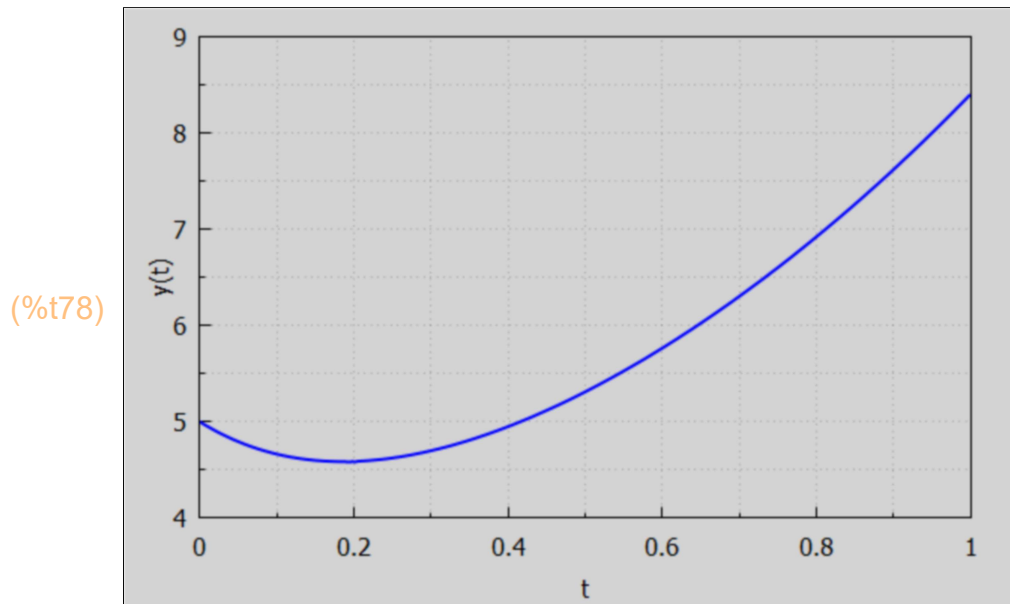
(%i76) `yex3 : rhs (dsoln);`

(yex3)
$$\frac{77 \%e^t}{25} - \frac{(10 t+2) \%e^{-4 t}}{25} + 2 \%e^{-4 t}$$

(%i77) `Ex3(t) := "yex3;`

(%o77) `Ex3(t) :=`
$$\frac{77 \%e^t}{25} - \frac{(10 t+2) \%e^{-4 t}}{25} + 2 \%e^{-4 t}$$

(%i78) `wxdraw2d (xlabel = "t", ylabel = "y(t)", yrange = [4,9],
explicit (Ex3(t), t, 0, 1))$`



(%i79) `dy : diff (Ex3(t),t);`

(dy)
$$\frac{77 \%e^t}{25} + \frac{4 (10 t+2) \%e^{-4 t}}{25} - \frac{42 \%e^{-4 t}}{5}$$

(%i80) `tmin : find_root (dy, t, 0.1, 0.3);`

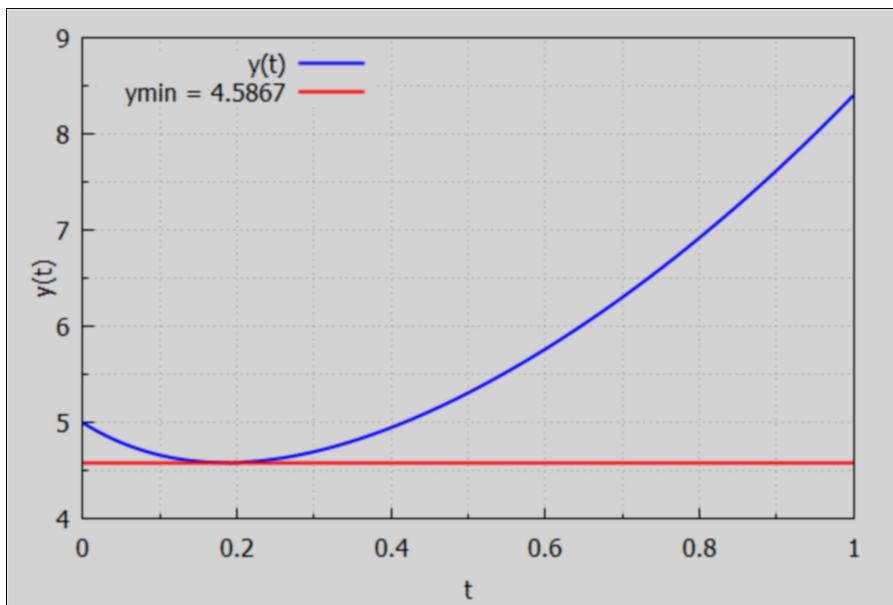
(tmin) 0.18541

(%i81) `ymin : Ex3(tmin);`

(ymin) 4.5867

```
(%i82) wxdraw2d (xlabel = "t", ylabel = "y(t)", yrange = [4,9], key_pos = top_left,
key = "y(t)", explicit (Ex3(t), t, 0, 1),color = red, key = sconcat (" ymin = ", ymin),
explicit (ymin, t, 0, 1))$
```

(%t82)



5 Higher Order ODE's With desolve (eqn, [y(t)])

We follow Sec. 16.7 in Chiang and Wainwright.

ode2 cannot handle third order or higher ODE's, so we must use desolve, which has a slightly different syntax. We presented an example of using desolve at the end of Dowling18A.wmxm.

5.1 Example 4: $y''''(t) + 6 y'''(t) + 14 y''(t) + 16 y'(t) + 8 y = 24$

Notice that we must write 'diff(y(t),t,4)', and not 'diff (y,t,4)' when defining the differential equation de. If we don't use atvalue to define initial values, we get a formal solution.

(%i84) `de : 'diff(y(t),t,4) + 6*'diff (y(t),t,3) + 14*'diff (y(t),t,2) + 16*'diff (y(t),t) + 8*y(t) = 24;`
`gsoln : desolve (de, [y(t)]);`

(de)
$$\frac{d^4}{dt^4} y(t) + 6 \left(\frac{d^3}{dt^3} y(t) \right) + 14 \left(\frac{d^2}{dt^2} y(t) \right) + 16 \left(\frac{d}{dt} y(t) \right) + 8 y(t) = 24$$

(gsoln)
$$y(t) = \%e^{-t} \left(\frac{\sin(t) \left(\frac{d^2}{dt^2} y(t) \Big|_{t=0} + 4 \left(\frac{d}{dt} y(t) \Big|_{t=0} \right) + 4 y(0) - 12 \right)}{2} - \frac{\cos(t) \left(\frac{d^3}{dt^3} y(t) \Big|_{t=0} + 5 \left(\frac{d^2}{dt^2} y(t) \Big|_{t=0} \right) + 8 \left(\frac{d}{dt} y(t) \Big|_{t=0} \right) + 4 y(0) - 12 \right)}{2} \right) + \frac{\%e^{-2t} \left(\frac{d^3}{dt^3} y(t) \Big|_{t=0} + 5 \left(\frac{d^2}{dt^2} y(t) \Big|_{t=0} \right) + 8 \left(\frac{d}{dt} y(t) \Big|_{t=0} \right) + 6 y(0) - 18 \right)}{2} + \frac{t \%e^{-2t} \left(\frac{d^3}{dt^3} y(t) \Big|_{t=0} \right)}{2} + 2 t \%e^{-2t} \left(\frac{d^2}{dt^2} y(t) \Big|_{t=0} \right) + 3 t \%e^{-2t} \left(\frac{d}{dt} y(t) \Big|_{t=0} \right) + 2 y(0) t \%e^{-2t} - 6 t \%e^{-2t} + 3$$

To get a solution corresponding to initial values, use `atvalue`.

(%i89) `atvalue ('diff (y(t),t,3), t = 0, 0.5);`
`atvalue ('diff (y(t),t,2), t = 0, 1);`
`atvalue ('diff (y(t), t), t = 0, 2);`
`atvalue (y(t), t = 0, 4);`
`dsoln : desolve (de, [y(t)]);`

(%o85) 0.5

(%o86) 1

(%o87) 2

(%o88) 4

(dsoln)
$$y(t) = \%e^{-t} \left(\frac{13 \sin(t)}{2} - \frac{51 \cos(t)}{4} \right) + \frac{41 t \%e^{-2t}}{4} + \frac{55 \%e^{-2t}}{4} + 3$$

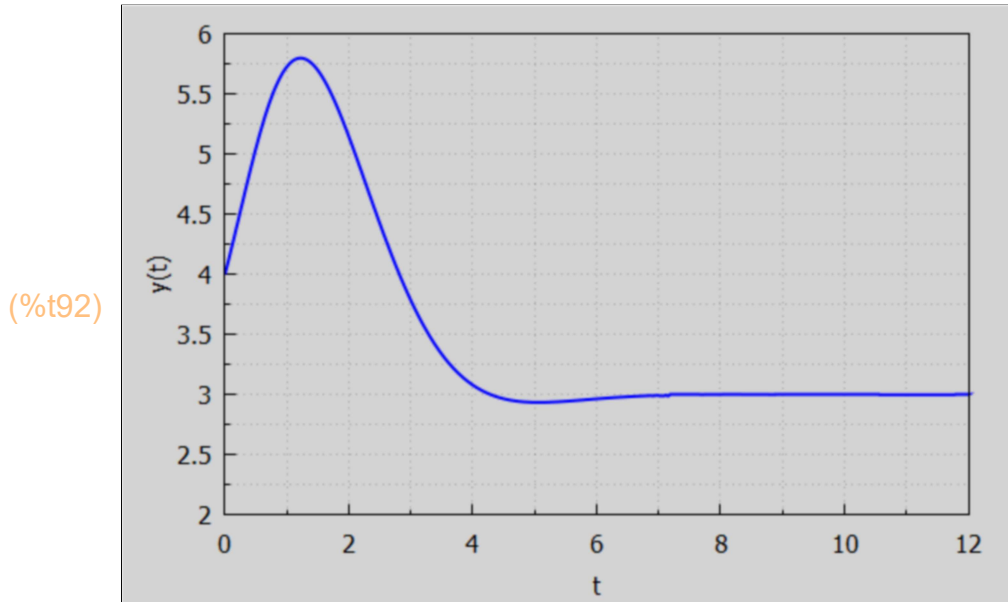
(%i90) `yex4 : rhs (dsoln);`

(yex4)
$$\%e^{-t} \left(\frac{13 \sin(t)}{2} - \frac{51 \cos(t)}{4} \right) + \frac{41 t \%e^{-2t}}{4} + \frac{55 \%e^{-2t}}{4} + 3$$

(%i91) `Ex4(t) := "yex4";`

(%o91)
$$\text{Ex4}(t) := e^{-t} \left(\frac{13 \sin(t)}{2} - \frac{51 \cos(t)}{4} \right) + \frac{41 t e^{-2t}}{4} + \frac{55 e^{-2t}}{4} + 3$$

(%i92) `wxdraw2d (xlabel = "t", ylabel = "y(t)", yrange = [2,6], explicit (Ex4(t), t, 0, 12))$`



(%i93) `dy : diff(yex4, t);`

(dy)
$$e^{-t} \left(\frac{51 \sin(t)}{4} + \frac{13 \cos(t)}{2} \right) - e^{-t} \left(\frac{13 \sin(t)}{2} - \frac{51 \cos(t)}{4} \right) - \frac{41 t e^{-2t}}{2} - \frac{69 e^{-2t}}{4}$$

(%i94) `tmax : find_root (dy, t, 0.5, 1.5);`

(tmax) 1.2209

(%i95) `ymax : Ex4(tmax);`

(ymax) 5.797

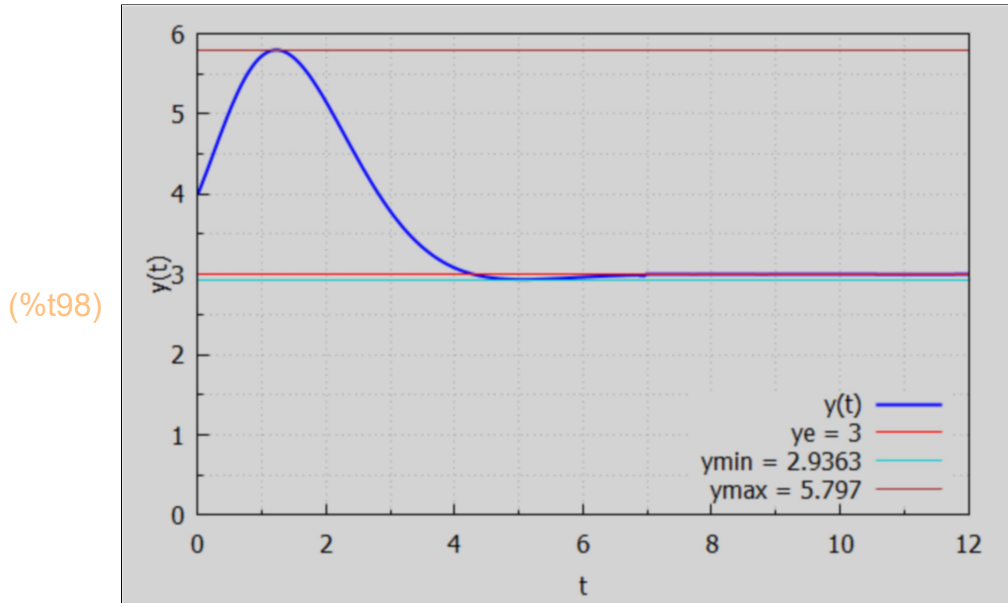
(%i96) `tmin : find_root (dy, t, 4.5, 5.5);`

(tmin) 5.0641

(%i97) `ymin : Ex4(tmin);`

(ymin) 2.9363

```
(%i98) wxdraw2d (xlabel = "t", ylabel = "y(t)", yrange = [0,6], key_pos = bottom_right,
  key = "y(t)", explicit (Ex4(t), t, 0, 12), color = red, line_width = 1, key = "ye = 3",
  explicit (3, t, 0, 12), color = dark_turquoise, key = sconcat("ymin = ", ymin),
  explicit (ymin, t, 0, 12), color = brown, key = sconcat ("ymax = ", ymax),
  explicit (ymax, t, 0, 12))$
```



6 2nd Order Difference Eqn., Char. Eqn. Roots r_1, r_2

We follow Chiang and Wainwright, Sec. 16.6. except for notation!

Given the 2nd order difference equation with constant coefficients

$y[t] + b_1 y[t-1] + b_2 y[t-2] = a$, equivalent to $y[t+2] + b_1 y[t+1] + b_2 y[t] = a$,
 the characteristic roots are the solutions of the characteristic equation $r^2 + b_1 r + b_2 = 0$.
 We call these characteristic roots r_1 and r_2 .

`croots (b1, b2)` returns the roots of the characteristic equation and is defined in `Econ2.mac`.

```
(%i99) [r1,r2] : croots (b1,b2);
```

```
(%o99) [  $\frac{\sqrt{b_1^2 - 4 b_2} - b_1}{2}$ ,  $-\frac{\sqrt{b_1^2 - 4 b_2} + b_1}{2}$  ]
```

```
(%i100) grind(%)$
```

```
[(sqrt(b1^2-4*b2)-b1)/2,-(sqrt(b1^2-4*b2)+b1)/2]$
```

r_1 and r_2 then are related to b_1 and b_2 by the following:

1. $r_1 + r_2 = -b_1$
2. $r_1 r_2 = b_2$
3. $(1 - r_1)(1 - r_2) = 1 + b_1 + b_2$.

The third relation is easy to derive by hand, using the first two relations. Getting Maxima to do the simplifications requires the use of ratsimp, or first expand, followed by ratsimp.

```
(%i101) r1 + r2, ratsimp;
```

```
(%o101) -b1
```

```
(%i102) r1*r2, ratsimp;
```

```
(%o102) b2
```

```
(%i103) (1-r1)*(1-r2), expand, ratsimp;
```

```
(%o103) b2+b1+1
```

7 Inflation and Unemployment in Discrete Time

We follow Chiang and Wainwright, Sec. 18.3.

With p the actual inflation rate (%), π the expected inflation rate (%), and U the unemployment rate (%), m the fixed rate of increase of money [$m = (1/M)^*dM/dt$] set as a monetary policy decision by the FED, we translate the continuous time equations used above into a discrete time version. Note that with $\Delta t = 1$ unit, $\Delta x/\Delta t = (x[t+\Delta t] - x[t])/ \Delta t = x[t+1] - x[t]$, and we are replacing $dx/dt \sim \Delta x/\Delta t = x[t+1] - x[t]$.

The continuous time equation

$$p(t) = \alpha - T - \beta * U(t) + g * \pi(t), \quad (0 < g \leq 1), \quad (\alpha, \beta > 0), \quad (1)$$

is written as ($t = 0, 1, 2, \dots$):

$$p[t] = \alpha - T - \beta * U[t] + g * \pi[t], \quad (0 < g \leq 1), \quad (\alpha, \beta > 0). \quad (10)$$

The continuous time equation

$$d\pi/dt = j * (p - \pi), \quad (0 < j \leq 1), \quad (2)$$

is written as

$$\pi[t+1] - \pi[t] = j * (p[t] - \pi[t]), \quad (0 < j \leq 1). \quad (11)$$

The continuous time equation

$$dU/dt = -k * (m - p(t)), \quad (k > 0), \quad (3)$$

is written as

$$U[t+1] - U[t] = -k * (m - p[t+1]), \quad (k > 0). \quad (12)$$

Eqn (12) assumes the change in $U[t]$ over the time interval $[t, t + \Delta t]$ depends on $(m - p[t+1])$, the rate of growth of "real money" in period $(t+1)$. Chiang and Wainwright leave as a problem the consequences of assuming the change in $U[t]$ depends on $(m - p[t])$ instead.

7.1 Time Path Difference Equation for Inflation $p[t]$, U param

Rewrite (10) as:

$$p[t+1] = \alpha - T - \beta^*U[t+1] + g^*\pi[t+1], \quad (10')$$

then subtract (10) from (10') to get the first difference of $p[t]$:

$$p[t+1] - p[t] = -\beta^*(U[t+1] - U[t]) + g^*(\pi[t+1] - \pi[t]).$$

Use (12) for the first difference of U on the rhs and (11) for the first difference of π on the rhs to get

$$p[t+1] - p[t] = \beta k (m - p[t+1]) + g j (p[t] - \pi[t]).$$

Solve (10) for $g^*\pi[t]$:

$$g^*\pi[t] = p[t] - \alpha + T + \beta^*U[t],$$

and use this to get, after collecting terms,

$$A^*p[t+1] - B^*p[t] + j^*\beta^*U[t] = C,$$

$$\text{with } A = (1 + \beta^*k), B = [1 - j^*(1 - g)], C = j^*(\alpha - T) + \beta^*k^*m.$$

which implies

$$A^*p[t+2] - B^*p[t+1] + j^*\beta^*U[t+1] = C, \text{ and after subtraction, we get}$$

$$A^*(p[t+2] - p[t+1]) - B^*(p[t+1] - p[t]) + j^*\beta^*(U[t+1] - U[t]) = 0$$

Now replace the difference in $U[t]$ using (3) to get, after collecting terms,

$$(1 + \beta^*k)^*p[t+2] - [1 + g^*j + (1 - j)^*(1 + \beta^*k)]^*p[t+1] + [1 - j^*(1 - g)]^*p[t] = j^*\beta^*k^*m.$$

We write this in the standard form we used in Dowling18B.wmxm:

$$p[t] + b1^*p[t-1] + b2^*p[t-2] = a, \quad (13)$$

in which $b1 = -[1 + g^*j + (1 - j)^*(1 + \beta^*k)]/(1 + \beta^*k)$,

$$b2 = [1 - j^*(1 - g)]/(1 + \beta^*k), \quad (14)$$

$$a = j^*\beta^*k^*m/(1 + \beta^*k).$$

Note that $0 < b2 < 1/(1 + \beta^*k) < 1$, given, $0 < g \leq 1$, $0 < j \leq 1$, $k > 0$, and $\beta > 0$.

This implies that $\text{sqrt}(b2) < 1$. We discuss $0 < b2 < 1$ in more detail below.

Define the list `IUparam`, taking care to replace in Eq. (14) brackets `[,]`, by parentheses `(,)`.

$$\text{(I104) IUparam : [b1 = - (1 + g*j + (1 - j)*(1 + \beta*k))/(1 + \beta*k), b2 = (1 - j*(1 - g))/(1 + \beta*k), a = j*\beta*k*m/(1 + \beta*k)];}$$

$$\text{(IUparam) [b1 = \frac{-(1-j)(k\beta+1) - gj - 1}{k\beta+1}, b2 = \frac{1 - (1-g)j}{k\beta+1}, a = \frac{j k m \beta}{k \beta + 1}]}$$

`(I105) grind(%)$`

$$\text{[b1 = ((-1-j)*(k*\beta+1))-g*j-1)/(k*\beta+1), b2 = (1-(1-g)*j)/(k*\beta+1), a = (j*k*m*\beta)/(k*\beta+1)]$}$$

The intertemporal equilibrium value of p is the particular integral of (13), which can be found using our Maxima function `ypart (b1, b2, a, t)` provided a is independent of t .

```
(%i106) ypart(b1,b2,a,t);
```

```
(yp) 
$$\frac{a}{b2+b1+1}$$

```

and we can use the list IUpam to express this, after simplification, in terms of our original parameters.

```
(%i107) at(yp, IUpam),ratsimp;
```

```
(%o107) m
```

As in the continuous time analysis, the equilibrium rate of inflation $p = (1/P)*dP/dt$ is exactly equal to the rate of monetary expansion $m = (1/M)*dM/dt$. If m is 5%, then, after waiting for the smoke to clear, $p = 5\%$.

The complete solution, as we saw in Dowling18B.wmx, has a form which depends on the relative values of $b1^2$ and $4*b2$. If $b1^2 > 4*b2$ then we have distinct real roots of the characteristic equation $r^2 + b1*r + b2 = 0$. For this real root case, if the magnitude of the dominant root is greater than 1, the time path is divergent, since $yc = \%A1*r1^t + \%A2*r2^t$.

If $4*b2 > b1^2$ we have complex characteristic roots, and $k = \text{sqrt}(b2)$ must be less than 1 for convergence, since $yc = k^t*(\text{oscillating fac})$. We have already seen above that $0 < b2 < 1$, so $k = \text{sqrt}(b2) < 1$, and complex solutions are convergent.

7.2 Review of croots, ypart, ycompl, ysoln, ytlist(b1,b2,a,y0,y1,tmax)

As a mini-review of second order difference equation solutions, consider the case of Dowling Prob. 18.18, which has $b1 = 7$, $b2 = 6$, $a = 42$, $b1^2 = 49 > 4*b2 = 24$, so there are two real (distinct) roots. Below we use Maxima functions defined in Econ2.mac.

`croots (b1, b2)` returns the roots of the characteristic equation $r^2 + b1*r + b2 = 0$.

```
(%i108) croots(7,6);
```

```
(%o108) [-1, -6]
```

The particular solution `ypart(b1,b2, a, t)`, even if a is constant, sometimes depends on t . If a does depend on t , `ypart` will not find the correct solution. (See our later section on 2nd order linear difference equations with a variable term.)

```
(%i109) ypart (7, 6, 42, t);
```

```
(%o109) 3
```

The complementary equation solution `ycompl (b1,b2,t)` contains two arbitrary constants $\%A1$ and $\%A2$, whose value depends on initial conditions (for example).

```
(%i110) ycompl(7,6, t);
```

```
(%o110) %A1 (-1)^t + %A2 (-6)^t
```

The indefinite solution $y_{\text{soln}}(b1, b2, a, t)$ is the sum of the particular solution and the solution of the complementary equation. Our function y_{soln} calls y_{part} and y_{compl} and will not return the correct solution if the right hand side 'a' depends on time t .

```
(%i111) ysoln(7, 6, 42, t);
```

```
(%o111) %A1 (-1)^t + %A2 (-6)^t + 3
```

The dominant root is -6, whose magnitude is greater than 1, hence any definite solution will diverge from $y_e = 3$.

In Dowling18B.wmx we show you how to evaluate the constants for various initial conditions.

A shorter route to viewing the solution behavior is to use $y_{\text{tlist}}(b1, b2, a, y0, y1, t_{\text{max}})$, which will produce the evolution of $y[t]$ whether or not 'a' depends on time.

Suppose we assume $y[0] = 5$, $y[1] = 4$. $y_{\text{tlist}}(b1, b2, a, y0, y1, t_{\text{max}})$ produces a list of values of $y[t]$ starting with $y[0]$.

```
(%i112) ytL : ytlist(7,6,42, 5, 4, 4);
```

```
ye = 3
```

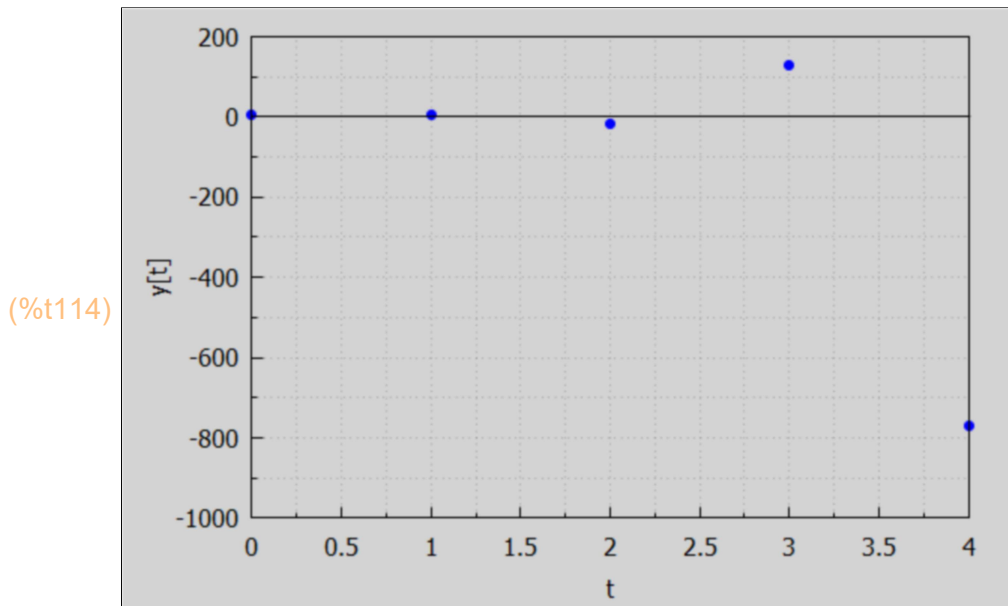
```
(ytL) [5,4,-16,130,-772]
```

Obviously divergent.

```
(%i113) tL : makelist (t, t, 0, 4);
```

```
(tL) [0,1,2,3,4]
```

```
(%i114) wxdraw2d(xlabel = "t", ylabel = "y[t]", yrange = [-1e3, 200],
  points (tL, yL), color = black, line_width = 1, explicit(0, t, 0, 4))$
```



7.3 $b_1^2 - 4*b_2 <--- R(g, j, k\beta)$

We define $R(g, j, k\beta)$ to be the difference $b_1^2 - 4*b_2$, expressed in terms of g, j , and $k\beta = k*\beta = \beta*k$.

```
(%i115) Rexpr : at (b1^2 - 4*b2, IUpam);
```

```
(Rexpr) 
$$\frac{(-(1-j)(k\beta+1)-gj-1)^2}{(k\beta+1)^2} - \frac{4(1-(1-g)j)}{k\beta+1}$$

```

```
(%i116) Rexpr : ratsubst (kbeta, beta*k, Rexpr);
```

```
(Rexpr) 
$$\frac{j^2(k\beta^2+2k\beta+g(-2k\beta-2))+g^2+1+k\beta^2+j(-2k\beta^2-2gk\beta-2k\beta)}{(k\beta^2+2k\beta+1)}$$

```

```
(%i117) R(g, j, kbeta) := "Rexpr";
```

```
(%o117) 
$$R(g, j, k\beta) := \frac{j^2(k\beta^2+2k\beta+g(-2k\beta-2))+g^2+1+k\beta^2+j(-2k\beta^2-2gk\beta-2k\beta)}{(k\beta^2+2k\beta+1)}$$

```

7.4 Real Roots Example for $p[t]$

We consider the case $g = 1/2, j = 1/3, \beta*k = 5, m = 2$. We can find the b_1, b_2 , and 'a' values associated with the 2nd order difference equation for $p[t]$: $p[t] + b_1*p[t-1] + b_2*p[t-2] = a$.

```
(%i118) R (1/2, 1/3, 5), numer;
```

```
(%o118) 0.18596
```

Since $R > 0$, $b_1^2 > 4b_2$, and we have real roots.

```
(%i119) IUpam;
```

```
(%o119) [b1 =  $\frac{-(1-j)(k\beta+1)-gj-1}{k\beta+1}$ , b2 =  $\frac{1-(1-g)j}{k\beta+1}$ , a =  $\frac{jk m \beta}{k\beta+1}$ ]
```

We use ratsubst to replace β^k , and use a list Case_p1 to replace the other three parameters.

```
(%i120) Case_p1 : [g = 1/2, j = 1/3, m = 2];
```

```
(Case_p1) [g =  $\frac{1}{2}$ , j =  $\frac{1}{3}$ , m = 2]
```

```
(%i121) at (IUpam, Case_p1);
```

```
(%o121) [b1 =  $-\frac{2(k\beta+1)}{3} - \frac{7}{6}$ , b2 =  $\frac{5}{6(k\beta+1)}$ , a =  $\frac{2k\beta}{3(k\beta+1)}$ ]
```

```
(%i122) ratsubst (5,  $\beta^k$ , %);
```

```
(%o122) [b1 =  $-\frac{31}{36}$ , b2 =  $\frac{5}{36}$ , a =  $\frac{5}{9}$ ]
```

Check that the long term value of $p[t]$ is $m = 2$.

```
(%i123) at (a/(1 + b1 + b2), %);
```

```
(%o123) 2
```

Check that the roots are real.

```
(%i124) croots (-31/36, 5/36), numer;
```

```
(%o124) [0.64617, 0.21494]
```

The roots of the characteristic equation are real, positive, and have magnitudes < 1 , implying a convergent solution case.

```
(%i125) tL : makelist (t, t, 0, 5);
```

```
(tL) [0, 1, 2, 3, 4, 5]
```

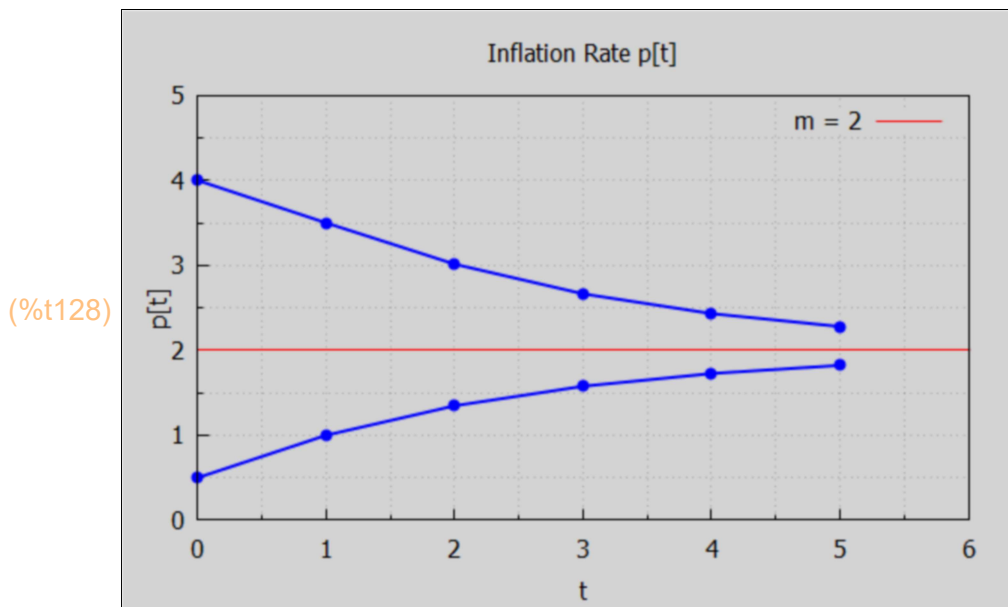
We can now use ylist (b1, b2, a, y0, y1, tmax), letting $p[0] = 4$, $p[1] = 3.5$, $tmax = 5$.

```
(%i126) ptL1 : ytlst (-31/36, 5/36, 5/9, 4, 3.5, 5);
          ye = 2
(ptL1) [4,3.5,3.0139,2.6647,2.4316,2.2793]
```

A second list ptL2 with $p[0] = 0.5$, $p[1] = 1$.

```
(%i127) ptL2 : ytlst (-31/36, 5/36, 5/9, 0.5, 1, 5);
          ye = 2
(ptL2) [0.5,1,1.3472,1.5768,1.7262,1.823]
```

```
(%i128) wxdraw2d (xlabel = "t", ylabel = "p[t]", xrange = [0,6], yrange = [0, 5],
                  title = " Inflation Rate p[t] ", points_joined = true,
                  points (tL, ptL1), points (tL, ptL2), color = red, line_width = 1,
                  key = "m = 2",explicit (2, t, 0, 6))$
```



which shows convergence to $m = 2$.

7.5 Complex Roots Example for $p[t]$

Now consider an example with $g = 0.9$, $j = 0.9$, $\beta^*k = 5$, and $m = 2$, using two different starting conditions (y_0, y_1) , and going out to $t = 5$. This case produces complex characteristic roots, so the convergence includes some oscillation. Check with $R(g, j, k\beta)$.

```
(%i129) R (0.9, 0.9, 5),numer;
(%o129) -0.44533
```

This shows that $b_1^2 < 4*b_2$, so we have complex roots.

(%i130) IUparam;

(%o130)
$$\left[b1 = \frac{-(1-j)(k\beta+1) - gj - 1}{k\beta+1}, b2 = \frac{1-(1-g)j}{k\beta+1}, a = \frac{jk m \beta}{k\beta+1} \right]$$

(%i131) Case_p2 : [g = 0.9, j = 0.9, m = 2];

(Case_p2) [g=0.9, j=0.9, m=2]

(%i132) at (IUparam, Case_p2);

(%o132)
$$\left[b1 = \frac{-0.1(k\beta+1) - 1.81}{k\beta+1}, b2 = \frac{0.91}{k\beta+1}, a = \frac{1.8k\beta}{k\beta+1} \right]$$

(%i133) ratsubst (5, β^*k , %);

(%o133)
$$\left[b1 = -\frac{241}{600}, b2 = \frac{91}{600}, a = \frac{3}{2} \right]$$

Check that the long term value of p[t] is m = 2.

(%i134) at (a/(1 + b1 + b2), %);

(%o134) 2

(%i135) croots (-241/600, 91/600);

(%o135)
$$\left[\frac{\sqrt{160319} \%i + 241}{1200}, -\frac{\sqrt{160319} \%i - 241}{1200} \right]$$

The magnitude of $K = \sqrt{b2}$ must be less than 1 for convergence in a complex root case.

(%i136) sqrt(91/600), numer;

(%o136) 0.38944

A complex root solution has the form $K^t * (\text{oscillating factor})$, where $K = \sqrt{b2}$.

If the magnitude of K is less than 1 the solution converges in the intertemporal value $p_e = m = 2$. The above cell shows we have convergence. Since the roots are complex, the convergence will show some oscillation around $p_e = 2$.

Using ytlst (b1, b2, a, p0, p1, tmax) with $p[0] = 4$, $p[1] = 3.5$, $tmax = 5$, p decreasing initially.

(%i137) ptL1_complex : ytlst (-241/600, 91/600, 3/2, 4, 3.5, 5);

ye = 2

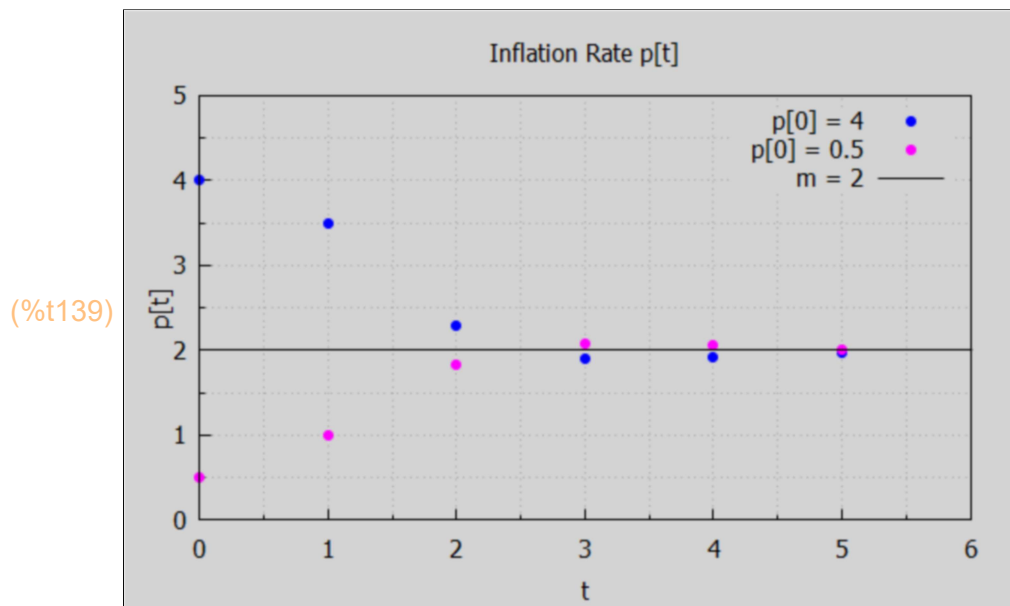
(ptL1_complex) [4, 3.5, 2.2992, 1.8927, 1.9115, 1.9807]

A second solution has $p[0] = 0.5$, $p[1] = 1$, $tmax = 5$, p increasing initially.


```
(%i138) ptL2_complex : ytolist (-241/600, 91/600, 3/2, 0.5, 1, 5);
      ye = 2
      (ptL2_complex) [0.5, 1, 1.8258, 2.0817, 2.0592, 2.0114]
```

Here we show a plot of both initially decreasing and initially increasing.

```
(%i139) wxdraw2d (xlabel = "t", ylabel = "p[t]", xrange = [0,6], yrange = [0, 5],
      title = " Inflation Rate p[t] ", key = "p[0] = 4", points (tL, ptL1_complex),
      color = magenta, key = "p[0] = 0.5", points (tL, ptL2_complex),
      color = black, line_width = 1, key = "m = 2", explicit (2, t, 0, 6))$
```



With complex characteristic roots, the convergence includes some oscillation.

7.6 General Characteristic Root Properties for Time Path of p[t]

We start with the general case.

```
(%i140) [r1,r2] : croots (b1,b2);
```

```
(%o140) [  $\frac{\sqrt{b1^2 - 4 b2} - b1}{2}$ ,  $-\frac{\sqrt{b1^2 - 4 b2} + b1}{2}$  ]
```

First look at the sum of the roots.

```
(%i141) r1 + r2, ratsimp;
```

```
(%o141) -b1
```

Now we look at our case.

(%i142) $r1pr2 : \text{at}(\text{ratsimp}(r1+r2), \text{IUparm});$

$$(r1pr2) - \frac{-(1-j)(k\beta+1)-gj-1}{k\beta+1}$$

We can absorb the overall negative sign out front into a multiplication of the numerator by that minus sign using $\text{num}(\text{expr})/\text{denom}(\text{expr})$ (this doesn't always work!).

(%i143) $\text{num}(r1pr2)/\text{denom}(r1pr2);$

$$(\%o143) \frac{(1-j)(k\beta+1)+gj+1}{k\beta+1}$$

With $\beta > 0$, $k > 0$, $0 < g \leq 1$, $0 < j \leq 1$, both the denominator and numerator are positive and $(r1 + r2) > 0$.

Now look at the product of the roots.

(%i144) $r1*r2, \text{ratsimp};$

$$(\%o144) b2$$

(%i145) $\text{at}(b2, \text{IUparm});$

$$(\%o145) \frac{1-(1-g)j}{k\beta+1}$$

Again, both the numerator and denominator are positive for all allowed values of β , g , k , j .

Hence $r1*r2 > 0$. We can also conclude that $r1*r2 < 1$, as follows:

First we have a positive denominator which reduces the magnitude of the positive numerator, and hence $b2 > 0$ and $r1*r2 > 0$.

a) If $g = 1$, the numerator = 1, $r1*r2 = 1/(+) < 1$.

b) If $g < 1$, consider first $j = 1$ also, then the numerator = $1-(1-g)$ which is positive but less than one, so $r1*r2 = (<1)/(+) < 1$.

Consider next both $g < 1$ and $j < 1$, $j(1-g) < j < 1$, the numerator is a positive number less one and the fraction is even smaller. So we have $0 < b2 < 1$ and $0 < r1*r2 < 1$.

What generally can we say about $(1 - r1)*(1 - r2)$?

(%i146) $(1-r1)*(1-r2), \text{expand}, \text{ratsimp};$

$$(\%o146) b2+b1+1$$

(%i147) $\text{at}(1+b1+b2, \text{IUparm}), \text{expand}, \text{ratsimp};$

$$(\%o147) \frac{jk\beta}{k\beta+1}$$

Both the numerator and denominator are positive, so we have the third general property
 $(1-r_1)(1-r_2) > 0$

To summarize, for our problem, the roots r_1 and r_2 of the characteristic equation have the three properties:

- P1: $r_1 + r_2 > 0$,
- P2: $0 < r_1 r_2 < 1$,
- P3: $(1 - r_1)(1 - r_2) > 0$.

7.6.1 Convergence Proved for Distinct Real Roots Case

For case 1, $b_1^2 > 4b_2$, we have two distinct real roots.

For this case if the magnitude of the dominant root is > 1 , the time path is divergent.

It turns out that for this inflation-unemployment model, we can prove that both roots are positive and less than 1, so that the time path is convergent for any choice of parameters (g, j, k, β) . (We have already concluded the complex root case is always convergent.)

Since property P2 includes the requirement that $r_1 r_2 > 0$, both roots must have the same sign (since if the signs of the roots were opposite, the product would be negative).

If both roots were negative, their sum would be negative, violating P1. Hence both roots must be positive. This means that no oscillation of the solution around y_e occurs.

If either root were equal to one, a violation of P3 would occur, so neither r_1 or r_2 can equal one.

It is also impossible that one root is greater than one and the other root is less than one, for that would result in $(1-r_1)(1-r_2) < 0$ in violation of property P3.

It follows that both roots (which must be positive) are either less than one, or both roots are greater than one.

However we can rule out the latter case, since if $r_1 > 1$ and $r_2 > 1$ then $r_1 r_2 > 1$ which violates property P2.

Hence each root must be positive and less than one. This means that we have smooth convergence to y_e .

We conclude that $0 < r_1 < 1$ and $0 < r_2 < 1$ and hence the time path of $p[t]$ is convergent for case 1, $b_1^2 > 4b_2$.

7.7 Time Path Difference Equation for Unemployment $U[t]$

This will take some work.

We repeat our starting set of discrete time relations

$$p[t] = \alpha - T - \beta U[t] + g \pi[t], \quad (0 < g \leq 1), \quad (\alpha, \beta > 0). \quad (10)$$

$$\pi[t+1] - \pi[t] = j(p[t] - \pi[t]), \quad (0 < j \leq 1). \quad (11)$$

$$U[t+1] - U[t] = -k(m - p[t+1]), \quad (k > 0). \quad (12)$$

We replace $p[t+1]$ in (12) by solving for $p[t]$ in (11) and translating in time to get
 $(1 + \beta^*k) U[t+1] - U[t] = k^*(\alpha - T - m) + k^*g^*\pi[t+1]$.

We difference this equation by replacing t by $t+1$ everywhere,

$(1 + \beta^*k) U[t+2] - U[t+1] = k^*(\alpha - T - m) + k^*g^*\pi[t+2]$, and subtracting to get

$$(1+\beta^*k) (U[t+2] - U[t+1]) - U[t+1] + U[t] = k^*g^*(\pi[t+2] - \pi[t+1]). \quad (12a)$$

On the left hand side the terms proportional to $U[t+1]$ can be combined as

$-(2 + \beta^*k) U[t+1]$, leaving

$$(1+\beta^*k) U[t+2] -(2 + \beta^*k) U[t+1] + U[t] = k^*g^*(\pi[t+2] - \pi[t+1]). \quad (12b)$$

Replace t by $t+1$ throughout in (11) to get

$$\pi[t+2] - \pi[t+1] = j^*(p[t+1] - \pi[t+1]). \quad (11')$$

Use this in the rhs of (12b) to get

$$(1+\beta^*k) U[t+2] -(2 + \beta^*k) U[t+1] + U[t] = k^*g^*j^*(p[t+1] - \pi[t+1]) \\ = k^*g^*j^*p[t+1] - k^*g^*j^*\pi[t+1]. \quad (12c)$$

Solve (12) for $k^*p[t+1]$:

$$k^*p[t+1] = U[t+1] - U[t] + k^*m. \quad (12p)$$

Solve (10) for $g^*\pi[t+1]$,

$$g^*\pi[t+1] = p[t+1] - \alpha + T + \beta^*U[t+1],$$

so

$$-k^*g^*j^*\pi[t+1] = -k^*j^*(p[t+1] - \alpha + T + \beta^*U[t+1]) \\ = -k^*j^*p[t+1] -k^*j^*(-\alpha + T + \beta^*U[t+1]) \\ = -k^*j^*p[t+1] + k^*j^*(\alpha - T) - k^*j^*\beta^*U[t+1]$$

and the rhs of (12c) becomes

$$\text{rhs}(12c) = k^*g^*j^*p[t+1] -k^*j^*p[t+1] + k^*j^*(\alpha - T) - k^*j^*\beta^*U[t+1] \\ = (g - 1)^*j^*k^*p[t+1] + k^*j^*(\alpha - T) - k^*j^*\beta^*U[t+1], \text{ now use (12p):} \\ = (g - 1)^*j^*(U[t+1] - U[t] + k^*m) + k^*j^*(\alpha - T) - k^*j^*\beta^*U[t+1] \\ = j^*(g - 1 - k^*\beta)^*U[t+1] - j^*(g - 1)^*U[t] + j^*k^*m^*(g - 1) + k^*j^*(\alpha - T).$$

Using this rhs(12c) in (12c) we get

$$(1+\beta^*k) U[t+2] -(2 + \beta^*k) U[t+1] + U[t] = j^*(g - 1 - k^*\beta)^*U[t+1] - j^*(g - 1)^*U[t] \\ + j^*k^*m^*(g - 1) + k^*j^*(\alpha - T) \quad (12d)$$

Setting all $U[t+1]$ terms on the lhs, those terms are

$$(-2 - \beta^*k - j^*g + j + j^*k^*\beta)^*U[t+1].$$

Bringing $U[t]$ also to the left side we get for (12d)

$$(1+\beta^*k) U[t+2] + (-2 - \beta^*k - j^*g + j + j^*k^*\beta)^*U[t+1] + \\ (1 + j^*(g - 1))^*U[t] = j^*k^*m^*(g - 1) + k^*j^*(\alpha - T)$$

which can be rewritten as

$$(1+\beta^*k) U[t+2] - [1 + g^*j + (1 - j)^*(1 + \beta^*k)]^*U[t+1] + [1 - j^*(1 - g)]^*U[t] = \\ k^*j^*[\alpha - T - (1 - g)^*m]. \quad (12e)$$

Dividing by $(1+\beta^*k)$ and replacing t by $(t-2)$ everywhere to get our standard form,

$$U[t] + b_1^*U[t-1] + b_2^*U[t-2] = a, \quad (15)$$

in which the constants (b_1, b_2, a) are:

The expressions for b_1 and b_2 found for the difference equation governing $U[t]$ are exactly the same as those found for the difference equation governing the difference equation for $p[t]$. Our convergence arguments then apply to $U[t]$ solutions also.

However, the value of a on the right hand side of the $U[t]$ difference equation is not the same as that on the right hand side of the $p[t]$ difference equation. There is no particular reason why the intertemporal value of inflation rate should be the same as the intertemporal value of the unemployment rate.

We define $ulUparam$ as a list containing the same b_1 and b_2 used with $IUparam$ above, but with a different definition of a . To distinguish the value of the a parameter for $U[t]$ from the a parameter for $p[t]$, we use the symbol aU .

```
(%i148) ulUparam : [b1 = - (1 + g*j + (1 - j)*(1+β*k))/(1 + β*k), b2 = (1 - j*(1 - g))/(1 + β*k),
                  aU = k*j*(α - T - (1 - g)*m)/(1+β*k)];
```

```
(ulUparam) [b1 =  $\frac{-(1-j)(k\beta+1) - gj - 1}{k\beta+1}$ , b2 =  $\frac{1 - (1-g)j}{k\beta+1}$ , aU =
             $\frac{jk(\alpha + (g-1)m - T)}{k\beta+1}$ ]
```

To identify the long term intertemporal value of U we look for the particular solution of the difference equation for $U[t]$, (15), by assuming that $U[t]$ is a constant C . Then $C + b_1*C + b_2*C = aU$, and $C = aU/(1 + b_1 + b_2)$.

We can also use our function $ypart(b_1, b_2, aU, t)$, since aU is a constant, independent of t .

```
(%i149) yp : ypart (b1, b2, aU, t);
```

```
(yp)  $\frac{aU}{b_2 + b_1 + 1}$ 
```

```
(%i150) Ue : at (yp, ulUparam), ratsimp;
```

```
(Ue)  $\frac{\alpha + (g-1)m - T}{\beta}$ 
```

The long run unemployment U_e thus can be written as

$$U_e = [\alpha - T - (1 - g)m]/\beta = [\alpha - T - (1 - g)pe]/\beta, \quad (17)$$

since the long run rate of inflation is $pe = m$.

This equation relates the long run unemployment with the long run inflation rate, and is called the long run Phillips relation.

In the special case $g = 1$, the dependence of U_e on pe disappears, and U_e will be the same irregardless of the long-run rate of inflation. The resulting expression then predicts the "natural rate of inflation":

$$U_{nat} = (\alpha - T)/\beta.$$

If $g = 1$, the long run Phillips Curve is a vertical line parallel to the long-run inflation rate (pe) axis, showing the same long-run unemployment no matter the long-run inflation rate pe .

If $g < 1$, the coefficient of pe in (17) is negative and $d(U_e)/d(pe) = -(1-g)/\beta < 0$, and an increase in the long run inflation rate will lead to a decrease in the long term unemployment.

Quoting Chiang and Wainwright p. 585:

"Then the long run Phillips Curve will turn out to be downward sloping, thereby still providing a trade-off relation between inflation and unemployment. Whether the long-run Phillips curve is vertical or negatively sloped is, therefore, critically dependent on the value of the g parameter, which, according to the expectations-augmented Phillips relation":

$$p(t) = \alpha - T - \beta U(t) + g\pi(t), \quad (0 < g \leq 1), \quad (\alpha, \beta > 0)$$

first used in the continuous time treatment of our inflation-unemployment model.

The value of the g parameter "measures the extent to which the expected rate of inflation π can work its way into the wage structure and the actual rate of inflation p ."

7.7.1 Case 1: Real Roots Example for $U[t]$

Consider the case with parameter choices: $\beta k = 5$, $\beta = 2$, $k = 5/2$, $g = 1/2$, $j = 1/3$, $\alpha - T = 11$, $m = 2$. We use `ratsubst` in a separate step to replace $\alpha - T = 11$.

The choices $\beta k = 5$, $g = 1/2$, and $j = 1/3$ agree with our real roots example for $p[t]$ above, and we can use the lists `ptL1` ($p[0] = 4$, $p[1] = 3.5$, with $p[t]$ decreasing to $m = 2$) and `ptL2` ($p[0]=0.5, p[1]=1$, with $p[t]$ increasing) here to plot both $p[t]$ converging to $m = 2$, and $U[t]$ converging to $U_e = 5$.

Note that in the short run, unemployment $U[t]$ can be increasing (if $U[0] < 5$) or decreasing (if $U[0] > 5$), whether or not $p[t]$ is decreasing ($p[0] > 2$) or increasing ($p[0] < 2$).

(%i151) `Ucase1 : [\beta = 2, k = 5/2, g = 1/2, j = 1/3, m = 2];`

(Ucase1) `[\beta=2, k=5/2, g=1/2, j=1/3, m=2]`

(%i152) at (uUparam, Ucase1);

(%o152) $\left[b1 = -\frac{31}{36}, b2 = \frac{5}{36}, aU = \frac{5(\alpha - T - 1)}{36} \right]$

(%i153) ratsubst(11, $\alpha - T$, %);

(%o153) $\left[b1 = -\frac{31}{36}, b2 = \frac{5}{36}, aU = \frac{25}{18} \right]$

(%i154) croots(-31/36, 5/36);

(%o154) $\left[\frac{\sqrt{241} + 31}{72}, -\frac{\sqrt{241} - 31}{72} \right]$

(%i155) float(%);

(%o155) [0.64617, 0.21494]

(%i156) at (Ue, Ucase1);

(%o156) $\frac{\alpha - T - 1}{2}$

(%i157) ratsubst (11, $\alpha - T$, %);

(%o157) 5

(%i158) tL;

(%o158) [0, 1, 2, 3, 4, 5]

Let UtL1 correspond to U[t] increasing, using U[0] = 1, U[1] = 1.5, tmax = 5, calling ytlist (b1, b2, aU, y0, y1, tmax).

(%i159) UtL1 : ytlist (-31/36, 5/36, 25/18, 1, 1.5, 5);

ye = 5

(UtL1) [1, 1.5, 2.5417, 3.3692, 3.9371, 4.3113]

Likewise let UtL2 correspond to U[t] decreasing to Ue = 5, using U[0] = 7, U[1] = 6.5, tmax=5.

(%i160) UtL2 : ytlist (-31/36, 5/36, 25/18, 7, 6.5, 5);

ye = 5

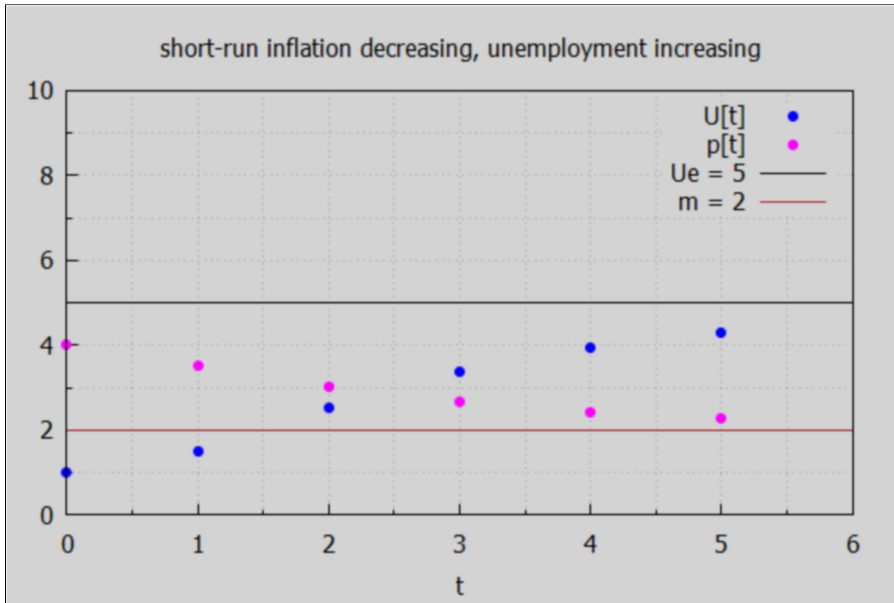
(UtL2) [7, 6.5, 6.0139, 5.6647, 5.4316, 5.2793]

Two plots using solution ptL1 (p decreasing). First using solution UtL1 (U increasing)

(%i161) ptL1;

(%o161) [4, 3.5, 3.0139, 2.6647, 2.4316, 2.2793]

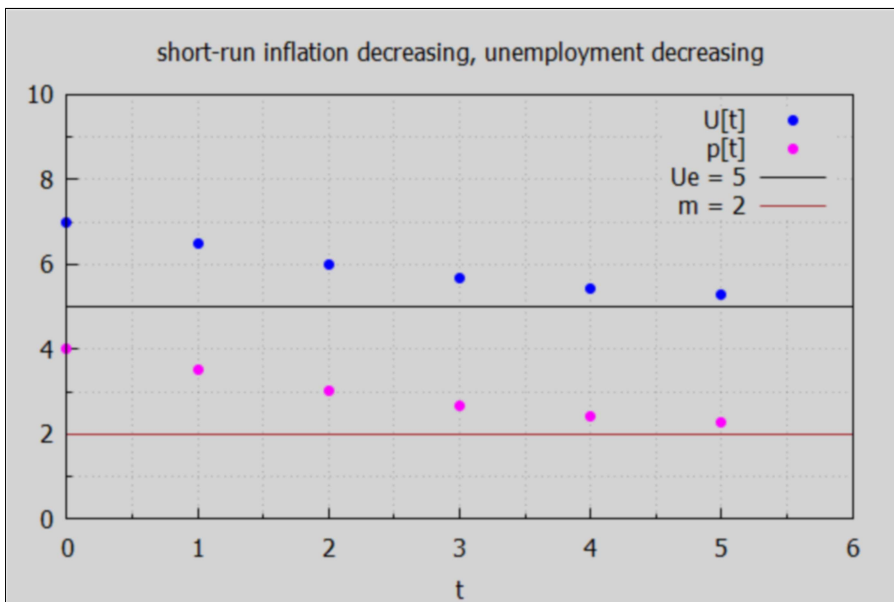

```
(%i162) wxdraw2d (xlabel = "t", yrange = [0,10], xrange = [0, 6],
    title = "short-run inflation decreasing, unemployment increasing",
    key = "U[t]", points (tL, UtL1), color = magenta, key = "p[t]",
    points (tL, ptL1), color = black, line_width = 1, key = "Ue = 5",
    explicit (5, t, 0, 6), color = brown, key = "m = 2", explicit (2, t, 0, 6))$
```



(%t162)

Next ptL1 (p decreasing) with UtL2 (U decreasing).

```
(%i163) wxdraw2d (xlabel = "t", yrange = [0,10], xrange = [0, 6],
    title = "short-run inflation decreasing, unemployment decreasing",
    key = "U[t]", points (tL, UtL2), color = magenta, key = "p[t]",
    points (tL, ptL1), color = black, line_width = 1, key = "Ue = 5",
    explicit (5, t, 0, 6), color = brown, key = "m = 2", explicit (2, t, 0, 6))$
```



(%t163)

Next two plots using list ptL2 (p[t] increasing).

(%i164) ptL2;

(%o164) [0.5, 1, 1.3472, 1.5768, 1.7262, 1.823]

First ptL2 (p increasing) with UtL2 (U decreasing).

(%i165) wxdraw2d (xlabel = "t", yrange = [0,10], xrange = [0, 6],
 title = "short-run inflation increasing, unemployment decreasing",
 key = "U[t]", points (tL, UtL2), color = magenta, key = "p[t]",
 points (tL, ptL2), color = black, line_width = 1, key = "Ue = 5",
 explicit (5, t, 0, 6), color = brown, key = "m = 2", explicit (2, t, 0, 6))\$



Next ptL2 (p increasing) with UtL1 (U increasing).

```
(%i166) wxdraw2d (xlabel = "t", yrange = [0,10], xrange = [0, 6],
  title = "short-run inflation increasing, unemployment increasing",
  key = "U[t]", points (tL, UtL1), color = magenta, key = "p[t]",
  points (tL, ptL2), color = black, line_width = 1, key = "Ue = 5",
  explicit (5, t, 0, 6), color = brown, key = "m = 2", explicit (2, t, 0, 6))$
```



7.7.2 Case2: Complex Roots Example for U[t]

We consider the case $g = 0.9$, $j = 0.9$, $\beta^*k = 5$,

Consider the case with parameter choices: $\beta^*k = 5$, $\beta = 2$, $k = 5/2$, $g = 0.9$, $j = 0.9$, $\alpha - T = 11$, $m = 2$. We use `ratsubst` in a separate step to replace $\alpha - T = 11$.

The choices $\beta^*k = 5$, $g = 0.9$, and $j = 0.9$ agree with our complex roots example for $p[t]$ above, and we can use the lists `ptL1_complex` ($p[0] = 4$, $p[1] = 3.5$, with $p[t]$ decreasing to $m = 2$) and `ptL2_complex` ($p[0]=0.5, p[1]=1$, with $p[t]$ increasing) here to plot both $p[t]$ converging to $m = 2$, and $U[t]$ converging to $Ue = 5$.

Note that in the short run, unemployment $U[t]$ can be initially increasing (if $U[0] < 5$) or initially decreasing (if $U[0] > 5$), whether or not $p[t]$ is initially decreasing ($p[0] > 2$) or initially increasing ($p[0] < 2$).

Check that $b1^2 < 4*b2$ (with these parameter choices) using `R(g, j, kbeta)`.

```
(%i167) R(0.9, 0.9, 5), numer;
```

```
(%o167) -0.44533
```

The negative sign says $b1^2 < 4*b2$ and we have complex roots (as we saw in the complex roots example for $p[t]$).

(%i168) lUparam;

$$(%o168) [b1 = \frac{-(1-j)(k\beta+1)-gj-1}{k\beta+1}, b2 = \frac{1-(1-g)j}{k\beta+1}, a = \frac{jk m \beta}{k\beta+1}]$$

(%i169) ulUparam;

$$(%o169) [b1 = \frac{-(1-j)(k\beta+1)-gj-1}{k\beta+1}, b2 = \frac{1-(1-g)j}{k\beta+1}, aU = \frac{jk(\alpha+(g-1)m-T)}{k\beta+1}]$$

(%i170) Ucase2 : [\beta = 2, k = 5/2, g = 9/10, j = 9/10, m = 2];

$$(Ucase2) [\beta = 2, k = \frac{5}{2}, g = \frac{9}{10}, j = \frac{9}{10}, m = 2]$$

(%i171) at (ulUparam, Ucase2);

$$(%o171) [b1 = -\frac{241}{600}, b2 = \frac{91}{600}, aU = \frac{3\left(\alpha - T - \frac{1}{5}\right)}{8}]$$

(%i172) ratsubst(11, \alpha - T, %);

$$(%o172) [b1 = -\frac{241}{600}, b2 = \frac{91}{600}, aU = \frac{81}{20}]$$

(%i173) croots(-241/600, 91/600);

$$(%o173) \left[\frac{\sqrt{160319} \%i + 241}{1200}, -\frac{\sqrt{160319} \%i - 241}{1200} \right]$$

(%i174) at (Ue, Ucase2);

$$(%o174) \frac{\alpha - T - \frac{1}{5}}{2}$$

(%i175) Ue2 : ratsubst (11, \alpha - T, %), numer;

(Ue2) 5.4

(%i176) UtL1_complex : ylist (-241/600, 91/600, 81/20, 1, 1.5, 5);

$$ye = \frac{27}{5}$$

(UtL1_complex) [1, 1.5, 4.5008, 5.6303, 5.6289, 5.457]

(%i177) UtL2_complex : ytlst (-241/600, 91/600, 81/20,7.5, 7, 5);

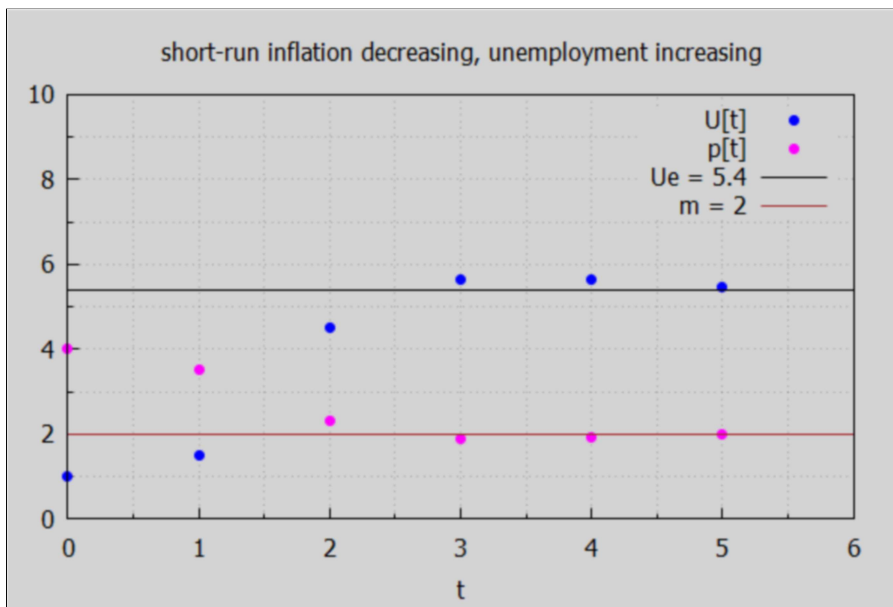
$$ye = \frac{27}{5}$$

(UtL2_complex) [7.5,7,5.7242,5.2875,5.3057,5.3792]

Plot of UtL1_complex (increases) and ptL1_complex (decreases)

(%i178) wxdraw2d (xlabel = "t", yrange = [0,10], xrange = [0, 6],
 title = "short-run inflation decreasing, unemployment increasing",
 key = "U[t]", points (tL, UtL1_complex), color = magenta, key = "p[t]",
 points (tL, ptL1_complex), color = black, line_width = 1, key = "Ue = 5.4",
 explicit (Ue2, t, 0, 6), color = brown, key = "m = 2", explicit (2, t, 0, 6))\$

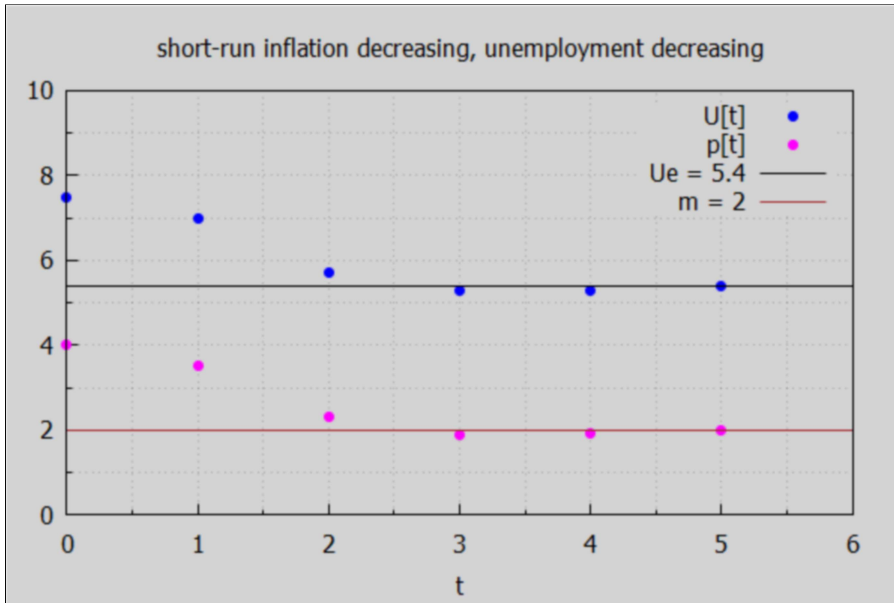
(%t178)



Plot of UtL2_complex (decreases) and ptL1_complex (decreases)

```
(%i179) wxdraw2d (xlabel = "t", yrange = [0,10], xrange = [0, 6],
    title = "short-run inflation decreasing, unemployment decreasing",
    key = "U[t]", points (tL, UtL2_complex), color = magenta, key = "p[t]",
    points (tL, ptL1_complex), color = black, line_width = 1, key = "Ue = 5.4",
    explicit (Ue2, t, 0, 6), color = brown, key = "m = 2", explicit (2, t, 0, 6))$
```

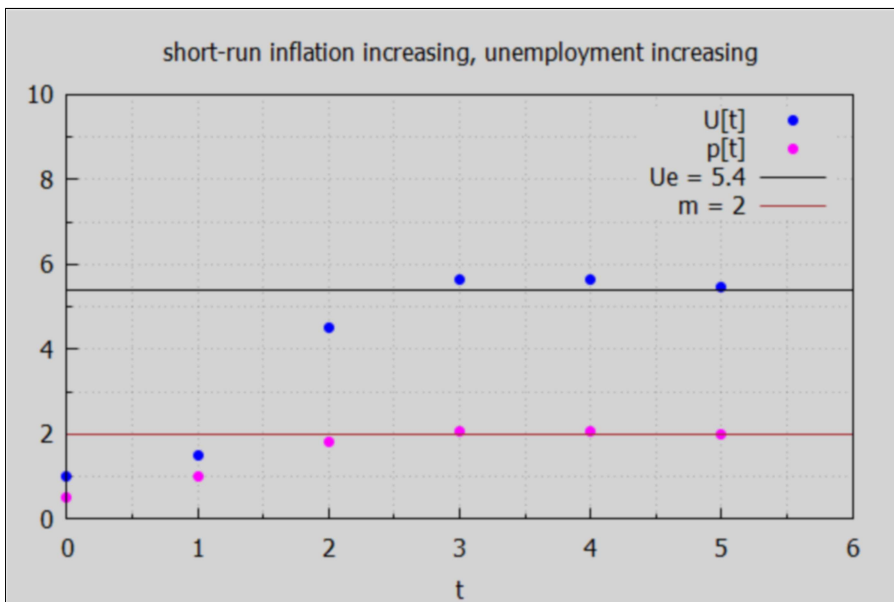
(%t179)



Plot of UtL1_complex (increases) and ptL2_complex (increases)

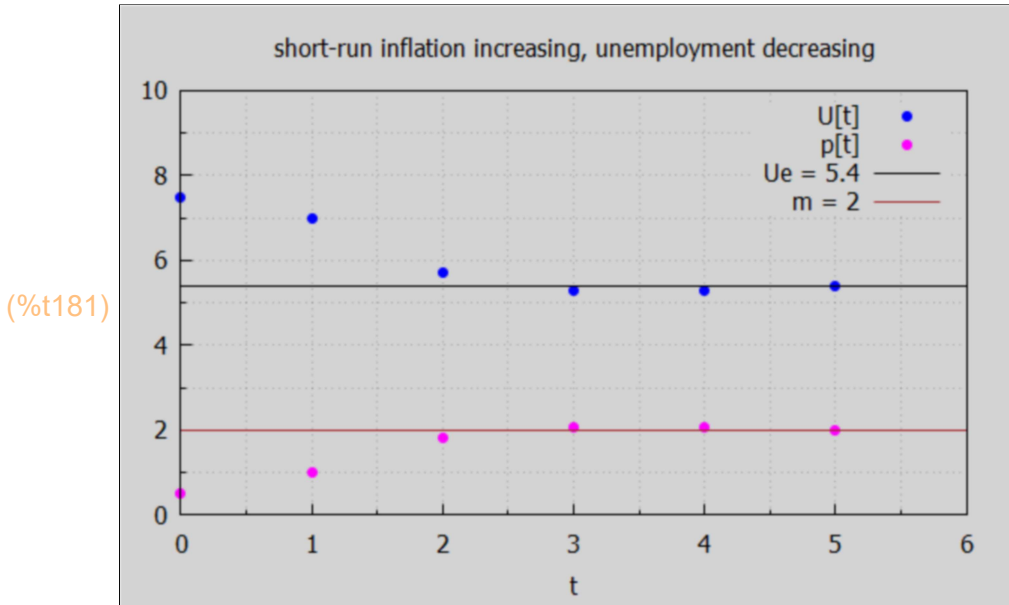
```
(%i180) wxdraw2d (xlabel = "t", yrange = [0,10], xrange = [0, 6],
    title = "short-run inflation increasing, unemployment increasing",
    key = "U[t]", points (tL, UtL1_complex), color = magenta, key = "p[t]",
    points (tL, ptL2_complex), color = black, line_width = 1, key = "Ue = 5.4",
    explicit (Ue2, t, 0, 6), color = brown, key = "m = 2", explicit (2, t, 0, 6))$
```

(%t180)



Plot of UtL2_complex (decreases) and ptL2_complex (increases)

```
(%i181) wxdraw2d (xlabel = "t", yrange = [0,10], xrange = [0, 6],
    title = "short-run inflation increasing, unemployment decreasing",
    key = "U[t]", points (tL, UtL2_complex), color = magenta, key = "p[t]",
    points (tL, ptL2_complex), color = black, line_width = 1, key = "Ue = 5.4",
    explicit (Ue2, t, 0, 6), color = brown, key = "m = 2", explicit (2, t, 0, 6))$
```



8 Variable Term and Higher Order Difference Equations

In this section we follow Chiang and Wainwright, Ch. 18, Sec. 4.

8.1 2nd Order Linear Difference Equations with a Variable Term

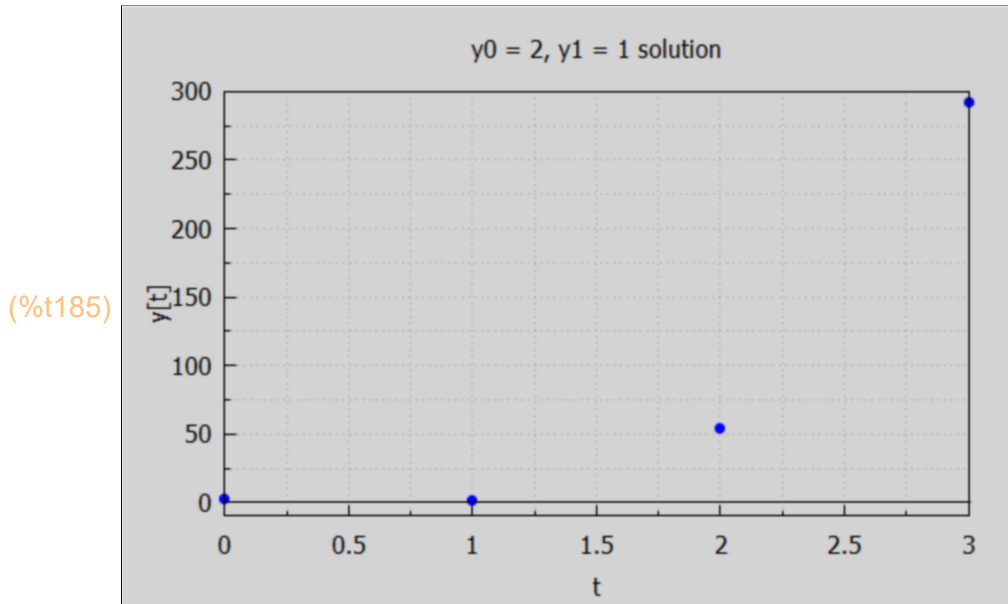
"A variable term" means that 'a' depends on the time t, in the equations $y[t] + b_1*y[t-1] + b_2*y[t-2] = a$, or $y[t] + b_1*y[t-1] + b_2*y[t-2] + b_3*y[t-3] = a$, etc.

8.1.1 $y[t] + y[t-1] - 3*y[t-2] = 7^t$ or $y[t+2] + y[t+1] - 3*y[t] = 7^{(t+2)}$

The quickest route to a numerical solution is to use our Maxima function `ytlst (b1, b2, a, y0, y1, tmax)`. We assume $y[0] = 2, y[1] = 1$ here. The use of `ytlst` with this syntax depends on starting with a difference equation first being written in the form: $y[t] + b_1*y[t-1] + b_2*y[t-2] = a$. Starting with $y[t] + y[t-1] - 3*y[t-2] = 7^t$, if we let $t \rightarrow t + 2$ in every term, we get $y[t+2] + y[t+1] - 3*y[t] = 7^{(t+2)}$. However, using `ytlst` requires we use the 'a' which matches the form $y[t] + y[t-1] - 3*y[t-2] = 7^t$.

```
(%i183) tL : makelist (tt, tt, 0, 6);
      yL : yllist (1,-3, 7^t, 2, 1, 6);
(tL)    [0, 1, 2, 3, 4, 5, 6]
(ytL)   [2, 1, 54, 292, 2271, 15412, 109050]

(%i185) print ("y[t] + y[t-1] - 3*y[t-1] = 7^t or y[t+2] + y[t+1] - 3*y[t] = 7^(t+2)")$
      wxdraw2d (xlabel = "t", ylabel = "y[t]", xrange = [0, 3], yrange = [-10, 300],
      title = "y0 = 2, y1 = 1 solution",
      points (tL, yL), color = black, line_width = 1, explicit (0, t, 0, 3))$
y[t] + y[t-1] - 3*y[t-1] = 7^t or y[t+2] + y[t+1] - 3*y[t] = 7^(t+2)
```



A longer route to a solution, which has the advantage of revealing the particular solution, is to use the Maxima function `solve_rec` (difference-eqn, $y[t]$) defined in the contributed code file `solve_rec.mac`, which we must first load. When using `solve_rec` we can use either form of the difference equation.

```
(%i186) load(solve_rec);
(%o186) C:/maxima-5.43.2/share/maxima/5.43.2/share/solve_rec/solve_rec.mac
```

```
(%i187) gsoln : solve_rec (y[t] + y[t-1] - 3*y[t-2] = 7^t, y[t]);
```

$$(\text{gsoln}) \quad y_t = \frac{7^{t+2}}{53} + \frac{(\sqrt{13}+1)^t \%k_1 (-1)^t}{2^t} + \frac{(\sqrt{13}-1)^t \%k_2}{2^t}$$

We see that the particular solution $yp[t] = 7^{(t+2)}/53$.

The right hand side of `gsoln` is our indefinite solution, which contains two constants, `%k[1]` and `%k[2]`.


```
(%i188) yindef : rhs(gsoln);
```

```
(yindef) 
$$\frac{7^{t+2}}{53} + \frac{(\sqrt{13}+1)^t \%k_1 (-1)^t}{2^t} + \frac{(\sqrt{13}-1)^t \%k_2}{2^t}$$

```

```
(%i189) grind (yindef);
```

$$7^{(t+2)}/53+((\text{sqrt}(13)+1)^{t*\%k[1]}*(-1)^t)/2^{t+}+((\text{sqrt}(13)-1)^{t*\%k[2]})/2^{t}$$

```
(%o189) done
```

Define a Maxima function ys(t) by placing two single quotes (') in front of yindef.

```
(%i190) ys(t) := "yindef;
```

```
(%o190) ys(t) := 
$$\frac{7^{t+2}}{53} + \frac{(\sqrt{13}+1)^t \%k_1 (-1)^t}{2^t} + \frac{(\sqrt{13}-1)^t \%k_2}{2^t}$$

```

We look for a solution for which y[0] = 2 and y[1] = 1.

```
(%i191) solns : solve ([ys(0) = 2, ys(1) = 1]);
```

```
(solns) [[%k2 = - $\frac{523\sqrt{13}-741}{1378}$ , %k1 =  $\frac{523\sqrt{13}+741}{1378}$ ]]
```

```
(%i192) ydef : at (yindef, solns[1]);
```

```
(ydef) 
$$\frac{7^{t+2}}{53} + \frac{(\sqrt{13}+1)^t (523\sqrt{13}+741) 2^{-t-1} (-1)^t}{689} - \frac{(\sqrt{13}-1)^t (523\sqrt{13}-741) 2^{-t-1}}{689}$$

```

```
(%i193) yd(t) := "ydef;
```

```
(%o193) yd(t) := 
$$\frac{7^{t+2}}{53} + \frac{(\sqrt{13}+1)^t (523\sqrt{13}+741) 2^{-t-1} (-1)^t}{689} - \frac{(\sqrt{13}-1)^t (523\sqrt{13}-741) 2^{-t-1}}{689}$$

```

```
(%i194) tL;
```

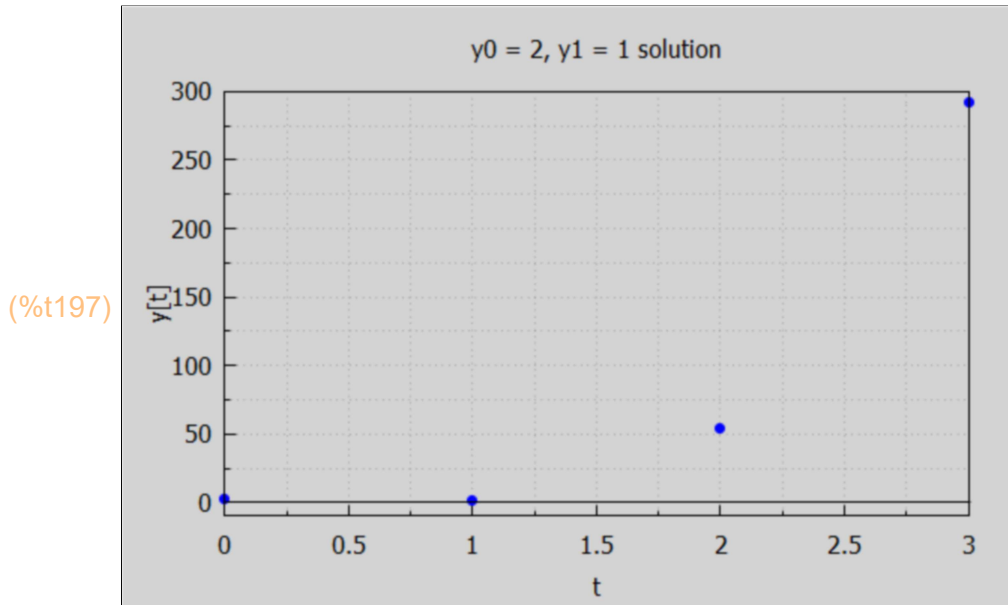
```
(%o194) [0,1,2,3,4,5,6]
```

```
(%i195) ytL : map ('yd, tL), numer;
```

```
(ytL) [2.0, 1.0, 54.0, 292.0, 2271.0, 1.5412 104, 1.0905 105]
```

Note that this list is arrived at much more quickly using `ytlist(b1,b2, a, y0, y1, tmax)`, as we showed above.

```
(%i197) print ("y[t] + y[t-1] - 3*y[t-1] = 7^t or y[t+2] + y[t+1] - 3*y[t] = 7^(t+2)")$
wxdraw2d (xlabel = "t", ylabel = "y[t]", xrange = [0, 3], yrange = [-10, 300],
title = "y0 = 2, y1 = 1 solution",
points (tL, yL), color = black, line_width = 1, explicit (0, t, 0, 3))$
y[t] + y[t-1] - 3*y[t-1] = 7^t or y[t+2] + y[t+1] - 3*y[t] = 7^(t+2)
```



8.1.2 $y[t+2] + y[t+1] - 3*y[t] = 7^t$, $y[t] + y[t-1] - 3*y[t-2] = 7^{t-2}$

Chiang and Wainwright, Sec. 18.4, start with a difference equation expressed in the form $y[t+2] + y[t+1] - 3*y[t] = 7^t$. If we use `solve_rec` (difference-eqn, $y[t]$) with this form, we get:

```
(%i198) gsoln : solve_rec (y[t + 2] + y[t + 1] - 3*y[t] = 7^t, y[t]);
```

```
(gsoln) 
$$y_t = \frac{7^t}{53} + \frac{(\sqrt{13}+1)^t \%k_1 (-1)^t}{2^t} + \frac{(\sqrt{13}-1)^t \%k_2}{2^t}$$

```

```
(%i199) yindef : rhs (gsoln);
```

```
(yindef) 
$$\frac{7^t}{53} + \frac{(\sqrt{13}+1)^t \%k_1 (-1)^t}{2^t} + \frac{(\sqrt{13}-1)^t \%k_2}{2^t}$$

```

```
(%i200) grind(yindef)$
```

```

$$7^t/53+((\text{sqrt}(13)+1)^t\%k[1]*(-1)^t)/2^t+((\text{sqrt}(13)-1)^t\%k[2])/2^t$$

```

```
(%i201) ys(t) := "yundef;
```

```
(%o201) ys(t) := 
$$\frac{7^t}{53} + \frac{(\sqrt{13}+1)^t \%k_1 (-1)^t}{2^t} + \frac{(\sqrt{13}-1)^t \%k_2}{2^t}$$

```

```
(%i202) solns : solve ([ys(0) = 2, ys(1) = 1]);
```

```
(solns) [[%k2 =  $\frac{197\sqrt{13}+1365}{1378}$ , %k1 =  $-\frac{197\sqrt{13}-1365}{1378}$ ]]
```

```
(%i203) ydef : at (yundef, solns[1]);
```

```
(ydef) 
$$\frac{7^t}{53} - \frac{(\sqrt{13}+1)^t (197\sqrt{13}-1365) 2^{-t-1} (-1)^t}{689} + \frac{(\sqrt{13}-1)^t (197\sqrt{13}+1365) 2^{-t-1}}{689}$$

```

```
(%i204) yd(t) := "ydef;
```

```
(%o204) yd(t) := 
$$\frac{7^t}{53} - \frac{(\sqrt{13}+1)^t (197\sqrt{13}-1365) 2^{-t-1} (-1)^t}{689} + \frac{(\sqrt{13}-1)^t (197\sqrt{13}+1365) 2^{-t-1}}{689}$$

```

```
(%i205) tL;
```

```
(%o205) [0,1,2,3,4,5,6]
```

```
(%i206) ytL : map ('yd, tL), numer;
```

```
(ytL) [2.0,1.0,6.0,4.0,63.0,292.0,2298.0]
```

To instead use ytlist (b1, b2, a, y0,y1, tmax), we need to translate the difference equation into the form: $y[t] + y[t-1] - 3*y[t] = 7^{t-2}$, in which $b1 = 1$, $b2 = -3$, $a = 7^{t-2}$.

```
(%i207) ytL : ytlist (1, -3, 7^(t-2), 2, 1, 6);
```

```
(ytL) [2,1,6,4,63,292,2298]
```

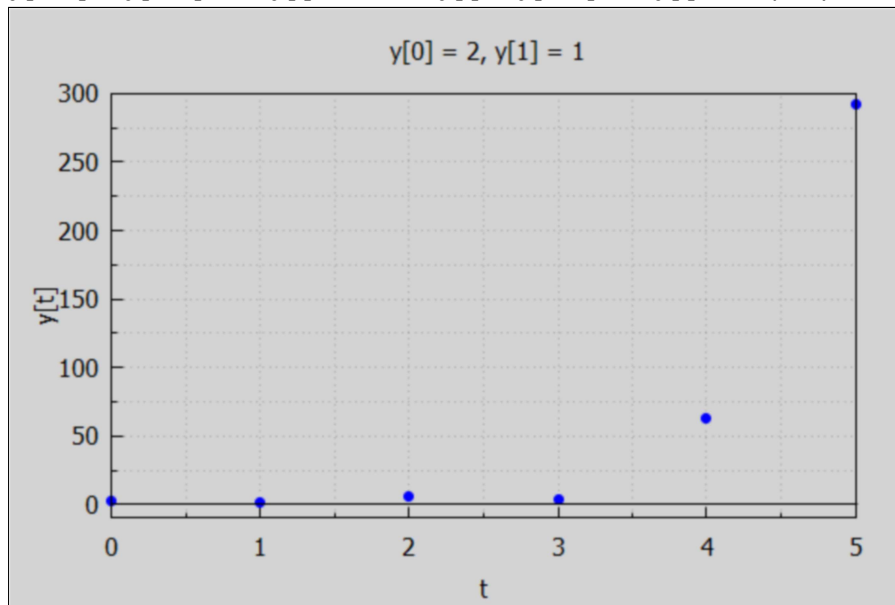
We see we get the same solution as gotten the long way using solve_rec.
We make a plot of our solution.

```
(%i208) tL;
```

```
(%o208) [0,1,2,3,4,5,6]
```

```
(%i210) print ("y[t+2] + y[t+1] - 3*y[t] = 7^t or y[t] + y[t-1] -3*y[t] = 7^(t-2)")$
wxdraw2d (xlabel = "t", ylabel = "y[t]", xrange = [0, 5], yrange = [-10, 300],
title = " y[0] = 2, y[1] = 1",
points (tL, yL), color = black, line_width = 1, explicit (0, t, 0, 5))$
```

$y[t+2] + y[t+1] - 3*y[t] = 7^t$ or $y[t] + y[t-1] -3*y[t] = 7^{(t-2)}$



(%t210)

8.1.3 $y[t+2] + 5*y[t+1] + 2*y[t] = t^2$ or $y[t] + 5*y[t-1] + 2*y[t-2] = (t-2)^2$

```
(%i211) tL;
```

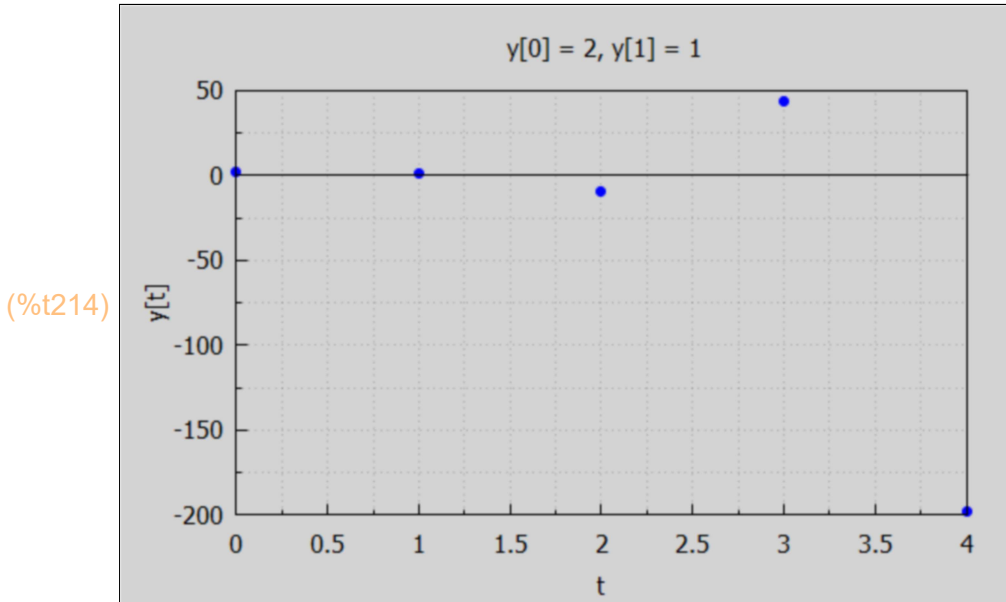
```
(%o211) [0,1,2,3,4,5,6]
```

In order to use ytlst, we use the form $y[t] + 5*y[t-1] + 2*y[t-2] = (t-2)^2$ to identify b1, b2, and 'a'.

```
(%i212) yTL : ytlst (5, 2, (t-2)^2, 2, 1, 6);
```

```
(yTL) [2,1,-9,44,-198,911,-4143]
```

```
(%i214) print ("y[t+2] + 5*y[t+1] + 2*y[t] = t^2 or y[t] + 5*y[t-1] + 2*y[t-2] = (t-2)^2")$
      wxdraw2d (xlabel = "t", ylabel = "y[t]", xrange = [0, 4], yrange = [-200, 50],
      title = " y[0] = 2, y[1] = 1",
      points (tL, yL), color = black, line_width = 1, explicit (0, t, 0, 4))$
y[t+2] + 5*y[t+1] + 2*y[t] = t^2 or y[t] + 5*y[t-1] + 2*y[t-2] = (t-2)^2
```



To check our methods, we use the the translated form: $y[t+2] + 5*y[t+1] + 2*y[t] = t^2$ with solve_rec.

```
(%i215) gsoln : solve_rec (y[t + 2] + 5*y[t + 1] + 2*y[t] = t^2, y[t]);
```

```
(gsoln) 
$$y_t = \frac{(5 - \sqrt{17})^t \%k_2 (-1)^t}{2^t} + \frac{(\sqrt{17} + 5)^t \%k_1 (-1)^t}{2^t} + \frac{t^2}{8} - \frac{7t}{32} + \frac{13}{256}$$

```

```
(%i216) yindef : rhs (gsoln);
```

```
(yindef) 
$$\frac{(5 - \sqrt{17})^t \%k_2 (-1)^t}{2^t} + \frac{(\sqrt{17} + 5)^t \%k_1 (-1)^t}{2^t} + \frac{t^2}{8} - \frac{7t}{32} + \frac{13}{256}$$

```

```
(%i217) ys(t) := "yindef;
```

```
(%o217) 
$$ys(t) := \frac{(5 - \sqrt{17})^t \%k_2 (-1)^t}{2^t} + \frac{(\sqrt{17} + 5)^t \%k_1 (-1)^t}{2^t} + \frac{t^2}{8} - \frac{7t}{32} + \frac{13}{256}$$

```

```
(%i218) solns : solve ([ys(0) = 2, ys(1) = 1]);
```

```
(solns) 
$$[[ \%k_2 = \frac{3029\sqrt{17} + 8483}{8704}, \%k_1 = -\frac{3029\sqrt{17} - 8483}{8704} ]]$$

```

```
(%i219) ydef : at (yindex, solns[1]);
```

```
(ydef) 
$$\frac{(5-\sqrt{17})^t (3029\sqrt{17}+8483) 2^{-t-9} (-1)^t}{17} - \frac{(\sqrt{17}+5)^t (3029\sqrt{17}-8483) 2^{-t-9} (-1)^t}{17} + \frac{t^2}{8} - \frac{7t}{32} + \frac{13}{256}$$

```

```
(%i220) yd(t) := "ydef;
```

```
(%o220) yd(t) := 
$$\frac{(5-\sqrt{17})^t (3029\sqrt{17}+8483) 2^{-t-9} (-1)^t}{17} - \frac{(\sqrt{17}+5)^t (3029\sqrt{17}-8483) 2^{-t-9} (-1)^t}{17} + \frac{t^2}{8} - \frac{7t}{32} + \frac{13}{256}$$

```

```
(%i221) ytL2 : map ('yd, tL), numer;
```

```
(ytL2) [2.0, 1.0, -9.0, 44.0, -198.0, 911.0, -4143.0]
```

This is the same list of values as we got by using ylist above, so the plot will look the same.

8.2 Higher-Order Linear Difference Equations

8.2.1 $y[t+3] - (7/8)*y[t+2] + (1/8)*y[t+1] + y[t]/32 = 9$

```
(%i222) gsoln : solve_rec (y[t+3] - 7*y[t+2]/8 + y[t+1]/8 + y[t]/32 = 9, y[t]);
```

```
(gsoln) 
$$y_t = \frac{\%k_1 (-1)^t}{8^t} + \frac{\%k_3 t + \%k_2}{2^t} + 32$$

```

```
(%i223) yindex : rhs (gsoln);
```

```
(yindex) 
$$\frac{\%k_1 (-1)^t}{8^t} + \frac{\%k_3 t + \%k_2}{2^t} + 32$$

```

```
(%i224) ys(t) := "yindex;
```

```
(%o224) ys(t) := 
$$\frac{\%k_1 (-1)^t}{8^t} + \frac{\%k_3 t + \%k_2}{2^t} + 32$$

```

```
(%i225) solns : solve ([ys(0) = 2, ys(1) = 3, ys(2) = 4]);
```

```
(solns) [[%k3 = -\frac{244}{5}, %k2 = -\frac{334}{25}, %k1 = -\frac{416}{25}]]
```

```
(%i226) ydef : at (yindex, solns[1]);
```

$$(ydef) \quad -\frac{52 \cdot 8^{1-t} (-1)^t}{25} + \frac{-\frac{244t}{5} - \frac{334}{25}}{2^t} + 32$$

```
(%i227) yd(t) := "ydef;
```

$$(%o227) \quad yd(t) := -\frac{52 \cdot 8^{1-t} (-1)^t}{25} + \frac{-\frac{244t}{5} - \frac{334}{25}}{2^t} + 32$$

```
(%i228) tL;
```

```
(%o228) [0,1,2,3,4,5,6]
```

```
(%i229) yL : map ('yd, tL), numer;
```

```
(yL) [2.0,3.0,4.0,12.063,18.961,23.958,27.216]
```

```
(%i231) print ("y[t+3] - (7/8)*y[t+2] + (1/8)*y[t+1] + y[t]/32 = 9 ")$
wxdraw2d (xlabel = "t", ylabel = "y[t]", xrange = [0, 6], yrange = [0, 30],
title = " y[0] = 2, y[1] = 3, y[2] = 4", points (tL, yL))$
y[t+3] - (7/8)*y[t+2] + (1/8)*y[t+1] + y[t]/32 = 9
```

```
(%t231)
```

